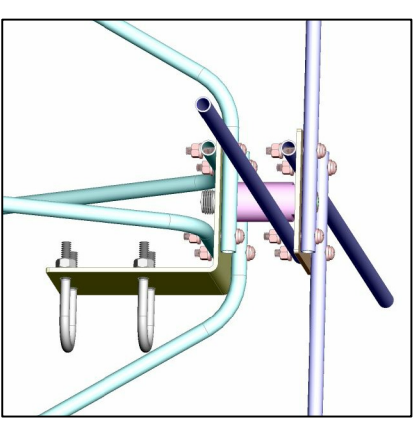


Assembly Note:
Item 3. Install Bottom Bent Radial Tubes first



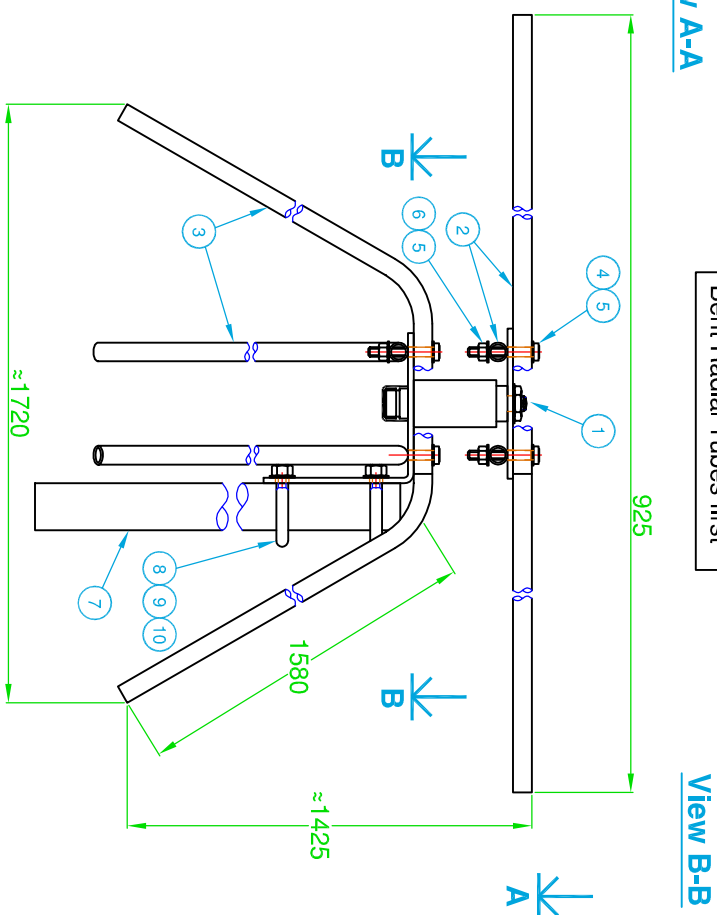
Assembly Sketch

B50RX

Discone Antenna

Item	Parts List Description	Qty.
1	Head Assembly	1
2	Top Radial Tubes	4
3	Bottom Bent Radial Tubes	4
4	Set Screw, Hex Hd, SS, M5 x 35	8
5	Washer, Flat, SS, M5	16
6	Nut, Hex Hd, SS, M5	8
7	Mount Tube Ø40 x 1500	1
8	U-Bolt, SS c/w Nuts	2
9	Washer, Flat, SS, M6	4
10	Washer, Spring, SS, M6	4

1080-B.dwg LM 24-04-15
Approved: GK 24-04-15



G-Tech Communication Services Pty. Ltd. Trading as :
ZGG SCALAR®
 DESIGNERS AND MANUFACTURERS OF RADIO FREQUENCY ANTENNAS
 Hill Street, Lidarow, Victoria, Australia.
 Tel: (03) 5177 1233 Fax: (03) 5177 1041



COPYRIGHT - G-Tech COMMUNICATION SERVICES PTY.LTD.
 NO PART OF THIS DRAWING IS TO BE REPRODUCED WITHOUT
 WRITTEN PERMISSION.