

**Detail 1:**

**SIDE VIEW:**

**FRONT VIEW:**

**Assembly Notes:**

- Slide the Upper Boom into the Lower Boom
- Position Booms for correct Dipole alignment
- Secure Booms with supplied Fasteners
- **See Sheet 2 for details**

**Sheet 1**

**Weight:**

Approx. 60 kgs  
not including Clamps

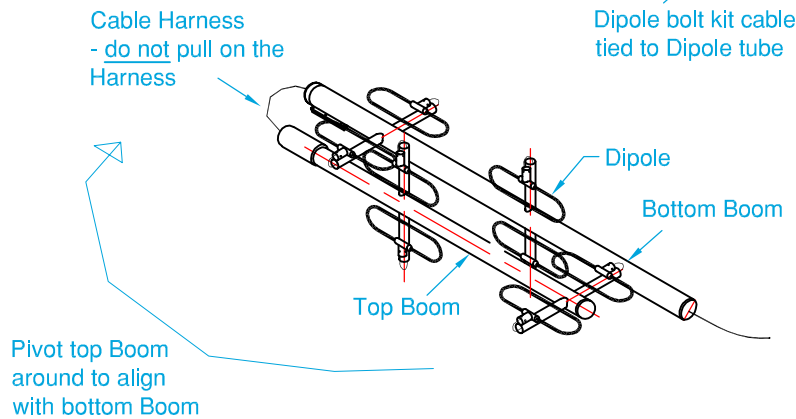
**DVA-118136-SB-6**

**Air Band Omni Split  
Boom Array -  
Aluminium  
Installation Guide**

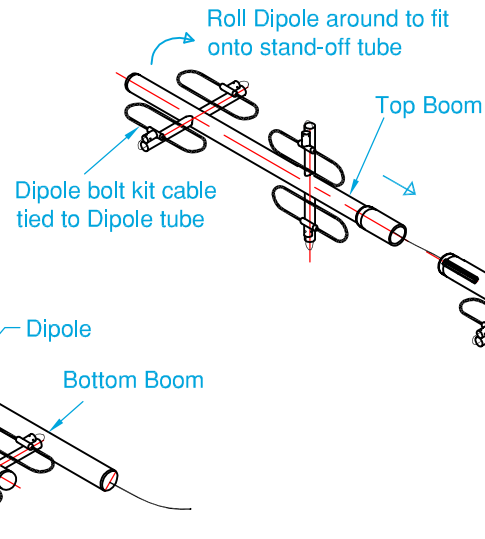


**Recommended Tools:**

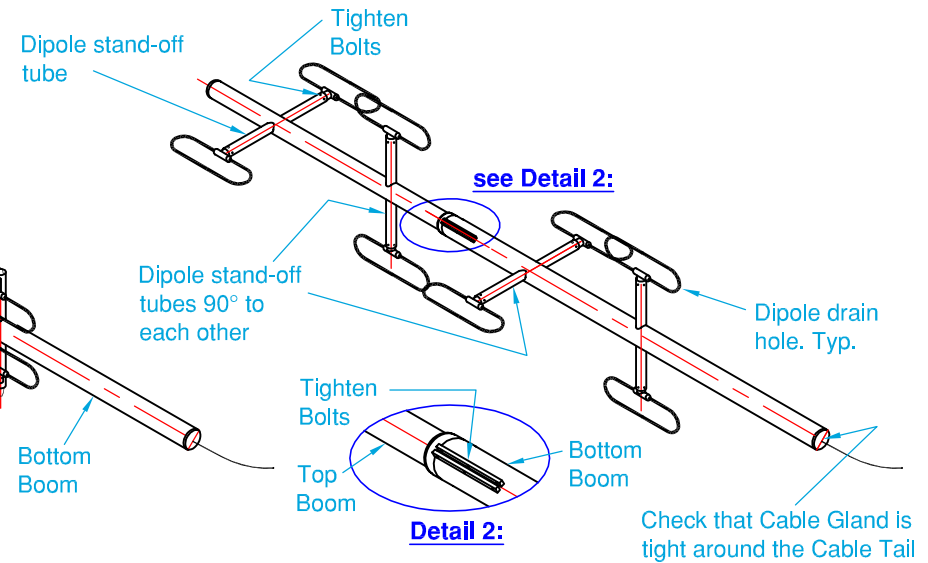
- Side Cutters
- 8mm Spanner
- 17mm Spanner
- 16mm or 5/8" Ring Spanner
- 250mm Shifting Spanner



**Step 1: Unpack**



**Step 2: Join Booms**



**Step 3: Fasten Dipoles**

**Important Note for Installers:**

- During site assembly of the Array it is essential that Cables are handled with great care.
- At no point should the internal Cable Harness joining the Boom halves be pulled out.

**Packing Notes:**

- The Array is 'flat packed' for shipping
- Boom halves have been 'folded' around on each other - the Cable Harness joining the two 'half Booms' is exposed - do not pull on this Cable during assembly of the Antenna
- Dipoles are partially disassembled and require re-assembly

**Assembly Notes:**

- Ensure the two Boom halves have suitable support before cutting any cable ties
- Only cut cable ties to free up the Boom halves ....
- .... pivot the top Boom around in line with the bottom Boom & slide the two halves together. **DO NOT** pull on the Cable joining the 2 Booms
- Align each Boom so the Dipole stand-offs are at 90° to each other ... then tighten the 3 bolts in the bottom Boom grab flats to secure the two Boom halves
- Cut the cable ties holding the first Dipole & carefully roll the Dipole onto the stand-off - fasten Dipole using the 3 bolts that are cable tied to the Dipole - Note that all Dipoles have a drain hole which must face downwards when the Antenna is finally installed
- Sight the Dipoles from the end of the Boom .. each Dipole should be at 90° to its neighbouring Dipole .. adjust boom as required.
- Check the tightness of all fasteners
- Finally, check Cable Gland is tight around the Cable Tail at the Boom end

**DVA-118136-SB-6**

**Air Band Omni Split  
Boom Array -  
Aluminium  
Installation Guide**

**Sheet 2**