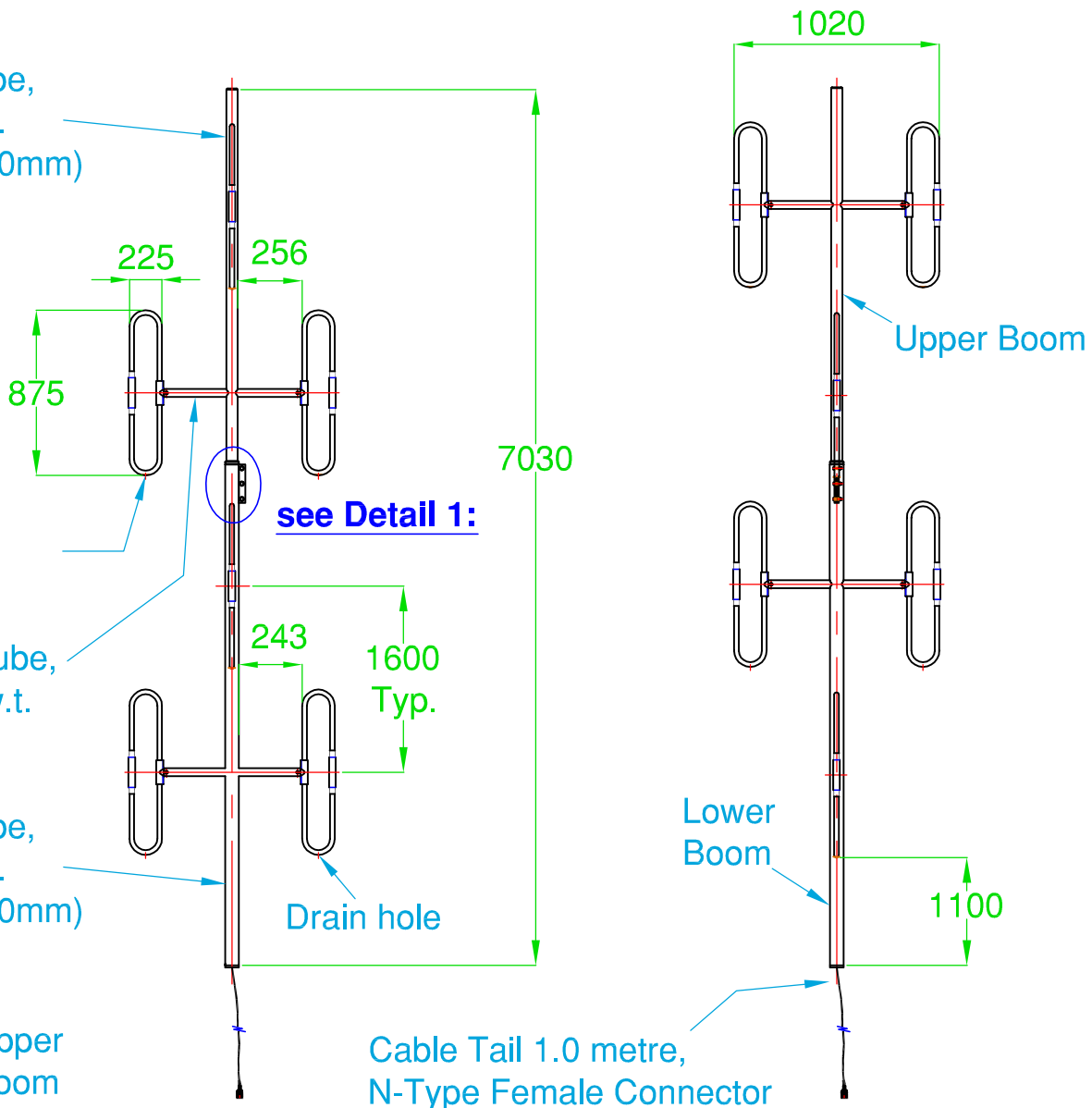


Upper Boom Tube,
 Ø76.2 x 6.35 w.t.
 Aluminium, (3500mm)

Dipole x 4,
 Ø19 x 1.6 w.t.
 Aluminium Tube,
 (1700mm)

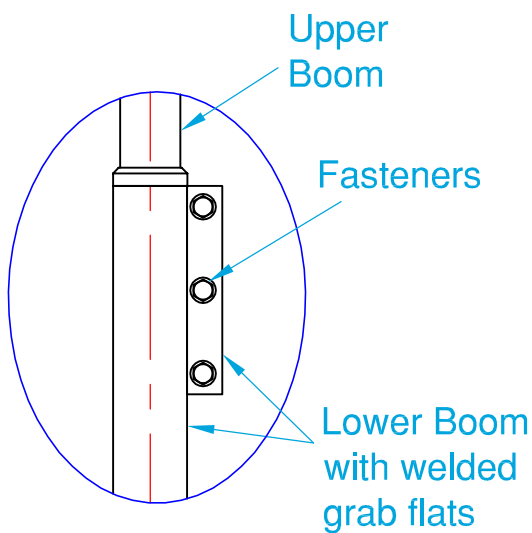
Mounting Tube,
 Ø40 x 4.7 w.t.
 Aluminium

Lower Boom Tube,
 Ø88.9 x 6.35 w.t.
 Aluminium, (3530mm)



SIDE VIEW:

FRONT VIEW:



Detail 1:

Assembly Notes:

- Slide the Upper Boom into the Lower Boom
- Position Booms for correct Dipole alignment
- Secure Booms with supplied Fasteners
- **See Sheet 2 for details**

Sheet 1

Weight:
 Approx. 50 kgs
 not including Clamps

DVA-1317AL-6

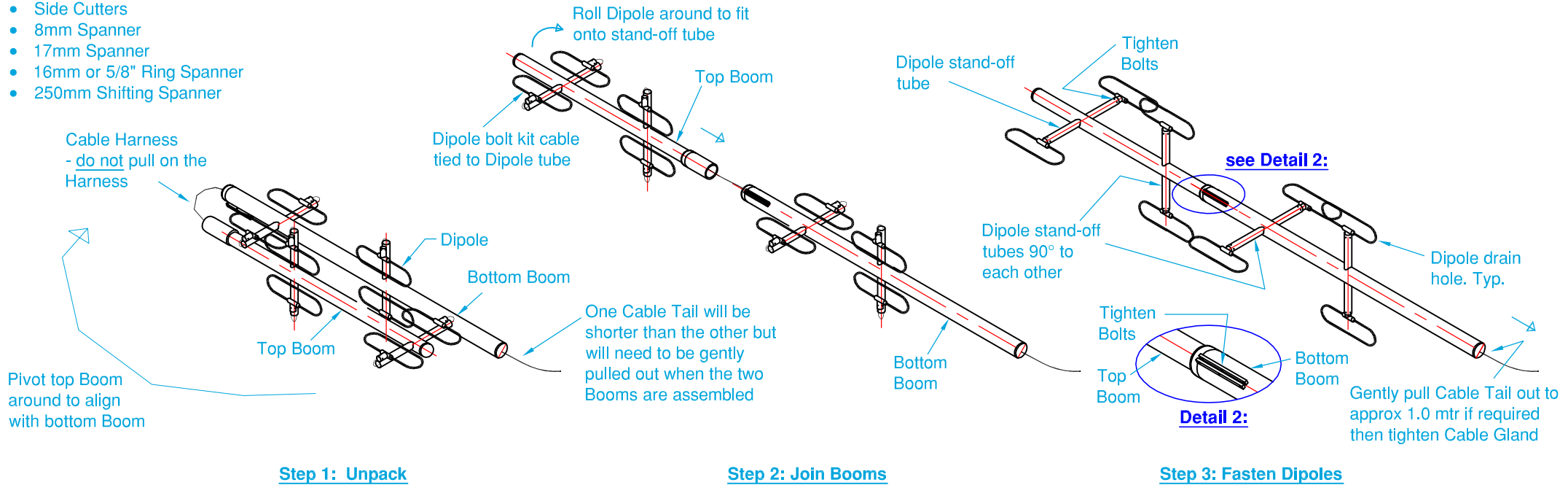
**VHF Omni Split Boom Array -
 Aluminium**

Installation Guide



Recommended Tools:

- Side Cutters
- 8mm Spanner
- 17mm Spanner
- 16mm or 5/8" Ring Spanner
- 250mm Shifting Spanner



Important Note for Installers:

- During site assembly of the Array it is essential that Cables are handled with great care.
- At no point should the internal Cable Harness joining the Boom halves be pulled out.

Packing Notes:

- The Array is 'flat packed' for shipping
- Boom halves have been 'folded' around on each other - the Cable Harness joining the two 'half Booms' is exposed - do not pull on this Cable during assembly of the Antenna
- The Cable Tails may need to be gently pulled out to final length once the Booms are assembled
- Dipoles are partially disassembled and require re-assembly

Assembly Notes:

- Ensure the two Boom halves have suitable support before cutting any cable ties
- Only cut cable ties to free up the Boom halves
- pivot the top Boom around in line with the bottom Boom & slide the two halves together. **DO NOT** pull on the Cable joining the 2 Booms
- Align each Boom so the Dipole stand-offs are at 90° to each other ... then tighten the 3 bolts in the bottom Boom grab flats to secure the two Boom halves
- Cut the cable ties holding the first Dipole & carefully roll the Dipole onto the stand-off - fasten Dipole using the 3 bolts that are cable tied to the Dipole - Note that all Dipoles have a drain hole which must face downwards when the Antenna is finally installed
- Sight the Dipoles from the end of the Boom .. each Dipole should be at 90° to its neighbouring Dipole .. adjust boom as required.
- Check the tightness of all fasteners
- Finally, tighten the Cable Gland around the Cable Tail at the Boom end

DVA-1317AL-6

VHF Omni Split Boom Array - Aluminium

Installation Guide

Sheet 2

