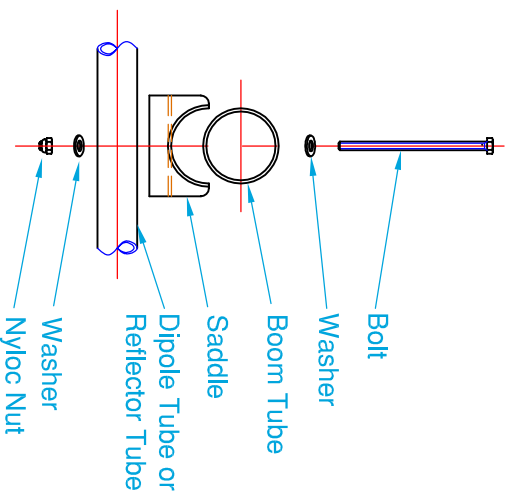


LINK BARS:
Fit Link Bars after attaching
Dipoles to Boom Tube

REFLECTOR:

Washer
Bolt and
Washer
Nut & Locking Nut
Washer
Identification
Number
Metal Saddle
Identification
Number
Washer
and Nut

BOOM TUBE:



Typical Assembly

PRODUCT INFORMATION NOTE

Installation Instructions:

1. Fit both Dipoles to the Boom Tube using Bolts & Washers through Dipole Tube, Saddle, Washer & 'Nylloc' Nut matching the assembly numbers shown in the diagram.
2. Note that Drain Holes in both Dipoles must be on the same side.
3. Fit Link Bars between both Dipoles. Install Link Bars onto Bolts, fit Washers & Nuts then secure with locking Nut.
4. Individually fit all other Element Tubes to Boom, matching corresponding Numbers on Element and Boom.
5. Strap Cable to Boom using Cable Ties (not provided) or similar.
6. Mounting can be **HORIZONTAL or VERTICAL polarisation:**

For **VERTICAL polarisation**, make sure the **Drain Holes** in both Dipoles are facing **downwards**.

For **HORIZONTAL polarisation**, mount the Yagi antenna with **Cable entry slot downwards**.

G-Tech Communication Services Pty. Ltd. Trading as :
ZGG SCALAR®
DESIGNERS AND MANUFACTURERS OF RADIO FREQUENCY ANTENNAS

Hall Street, Linderoot, Victoria, Australia.
Tel: (03) 5157 1203 Fax: (03) 5157 1841

