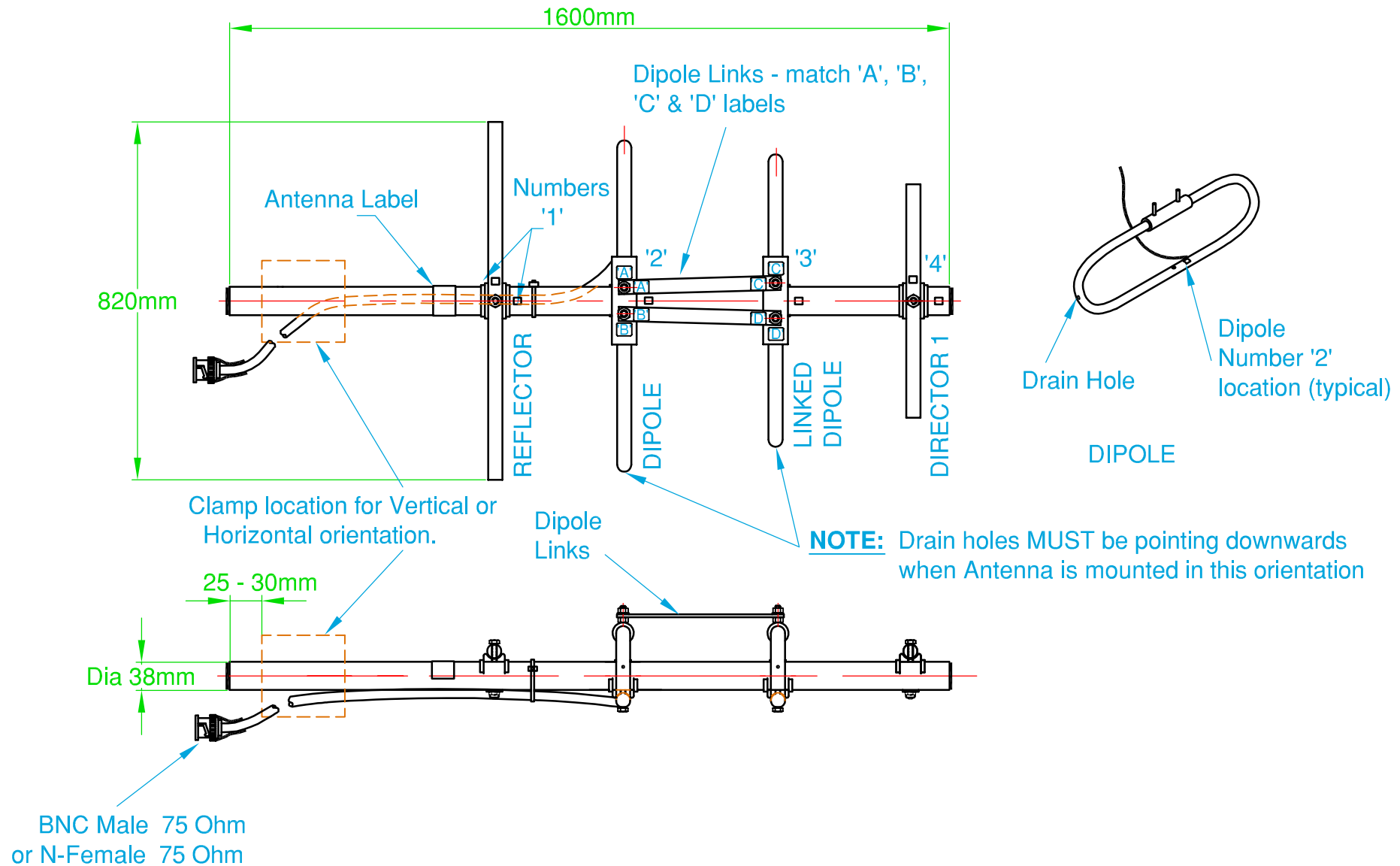


FREQUENCY: 174 - 230 MHz



Assembly Sketch

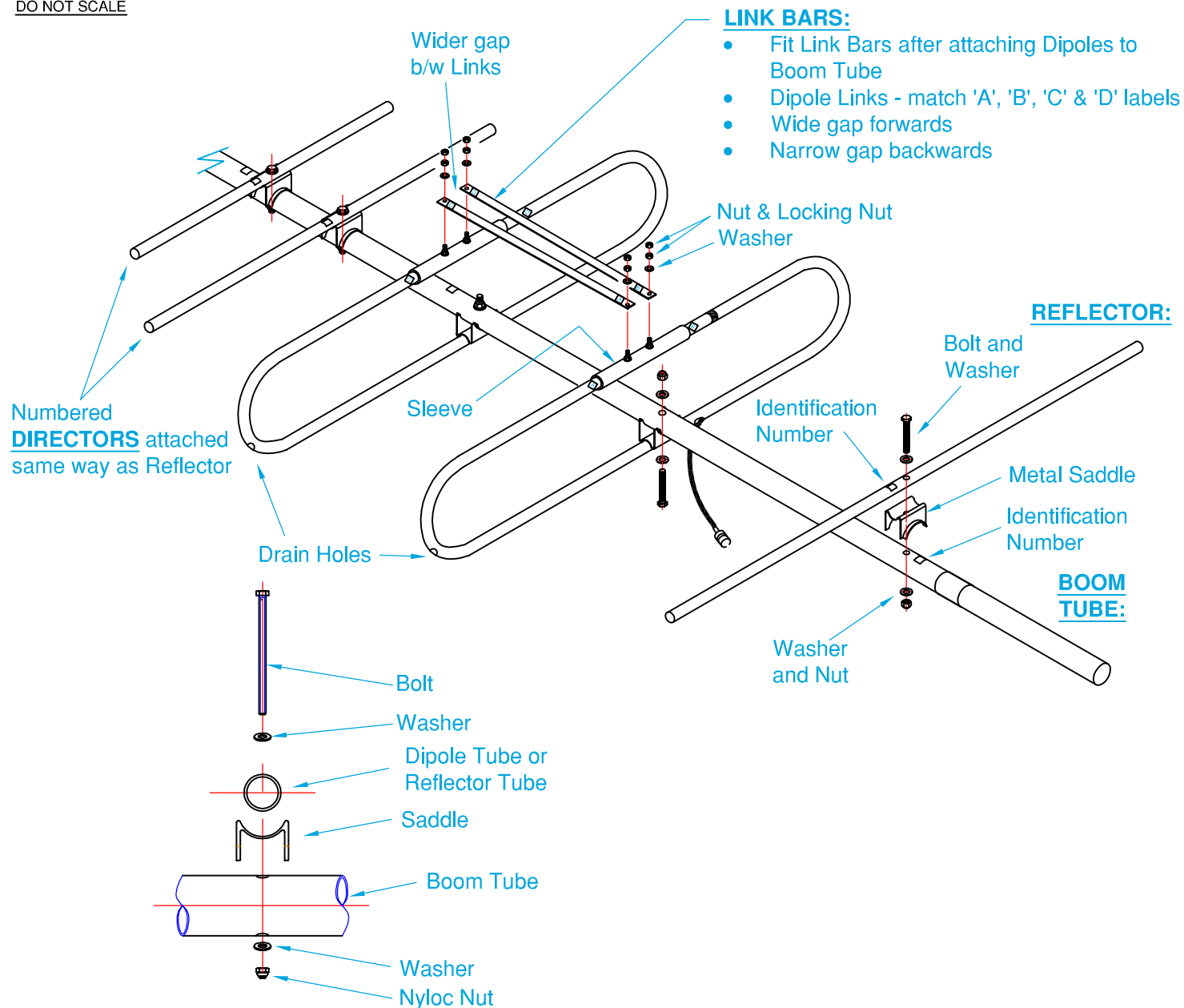
Y204-1722SS-75

75 Ohm, Dual-Dipole, Yagi Antenna

G-Tech Communication Services Pty. Ltd. Trading as :
ZCG SCALAR[®]
 DESIGNERS AND MANUFACTURERS OF RADIO FREQUENCY ANTENNAS
 Hall Street, Lindenow, Victoria, Australia.
 Tel: (03) 5157 1203 Fax: (03) 5157 1641



COPYRIGHT - G-Tech COMMUNICATION SERVICES PTY.LTD.
 NO PART OF THIS DRAWING IS TO BE REPRODUCED WITHOUT
 WRITTEN PERMISSION.

**Installation Instructions:**

- Fit both Dipoles to the Boom Tube using Bolts & Washers through Dipole Tube, Saddle, Washer & 'Nyloc' Nut matching the assembly numbers shown in the diagram.
- Note that Drain Holes in both Dipoles must be on the same side.
- Fit Link Bars between both Dipoles - match 'A', 'B', 'C' & 'D' labels. The gap will be widest to forwards. Install Link Bars onto Bolts, fit Washers & Nuts then secure with locking Nut.
- Individually fit all other Element Tubes to Boom, matching corresponding Numbers on Element and Boom.
- Strap Cable to Boom using Cable Ties (not provided) or similar.
- Mounting can be **HORIZONTAL** or **VERTICAL polarisation**:

For **VERTICAL polarisation**, make sure the **Drain Holes** in both Dipoles are facing **downwards**.

For **HORIZONTAL polarisation**, mount the Yagi antenna with **Cable entry slot downwards**.

Typical Assembly**Assembly Sketch**

Y200-1722-75 Series Yagi Antennas

75 Ohm

