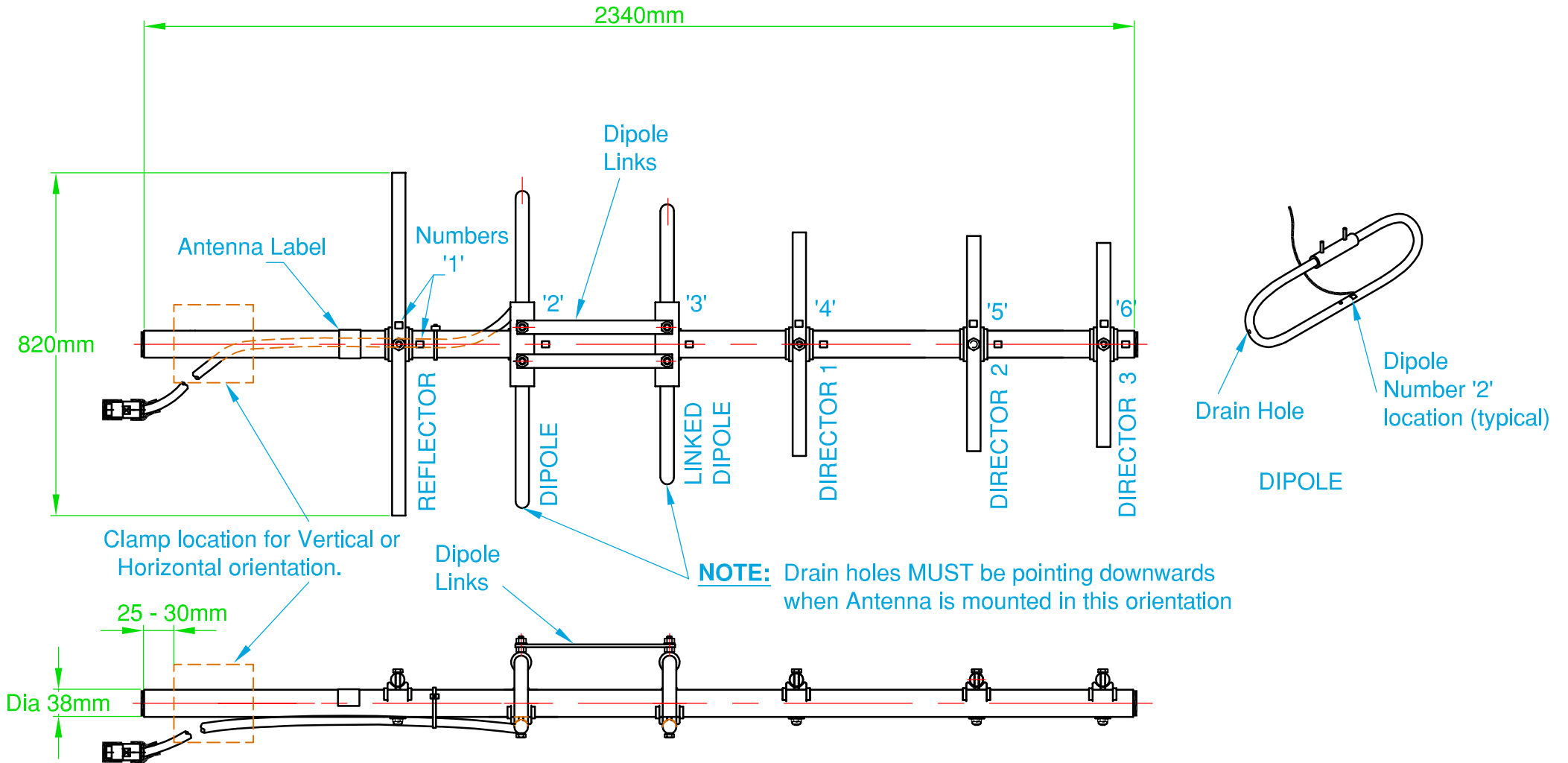


FREQUENCY: 174 - 230 MHz



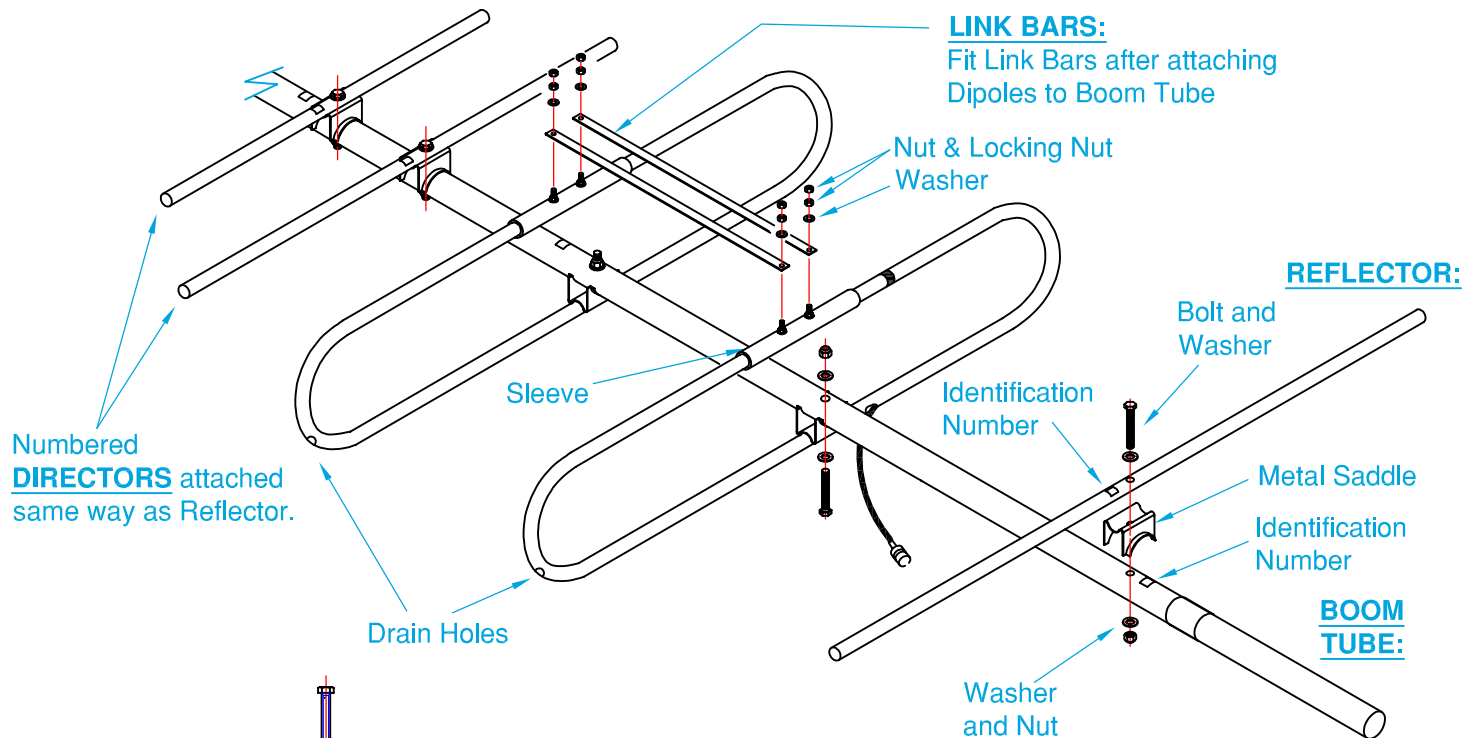
Assembly Sketches

Y206-1722SS YAGI ANTENNA

G-Tech Communication Services Pty. Ltd. Trading as :
ZCG SCALAR[®]
DESIGNERS AND MANUFACTURERS OF RADIO FREQUENCY ANTENNAS
Hall Street, Lindenow, Victoria, Australia.
Tel: (03) 5157 1203 Fax: (03) 5157 1641



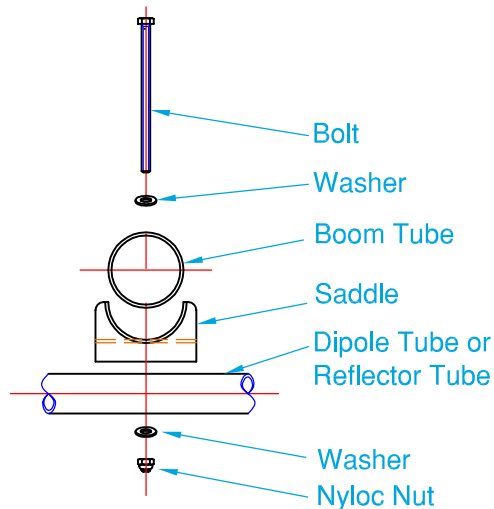
COPYRIGHT - G-Tech COMMUNICATION SERVICES PTY.LTD.
NO PART OF THIS DRAWING IS TO BE REPRODUCED WITHOUT
WRITTEN PERMISSION.

**Installation Instructions:**

1. Fit both Dipoles to the Boom Tube using Bolts & Washers through Dipole Tube, Saddle, Washer & 'Nyloc' Nut matching the assembly numbers shown in the diagram.
2. Note that Drain Holes in both Dipoles must be on the same side.
3. Fit Link Bars between both Dipoles. Install Link Bars onto Bolts, fit Washers & Nuts then secure with locking Nut.
4. Individually fit all other Element Tubes to Boom, matching corresponding Numbers on Element and Boom.
5. Strap Cable to Boom using Cable Ties (not provided) or similar.
6. Mounting can be **HORIZONTAL** or **VERTICAL polarisation**:

For **VERTICAL polarisation**, make sure the **Drain Holes** in both Dipoles are facing **downwards**.

For **HORIZONTAL polarisation**, mount the Yagi antenna with **Cable entry slot downwards**.

**Typical Assembly****PRODUCT INFORMATION NOTE****Assembly Sketch****Y200 - 1722 Series YAGI ANTENNAS**