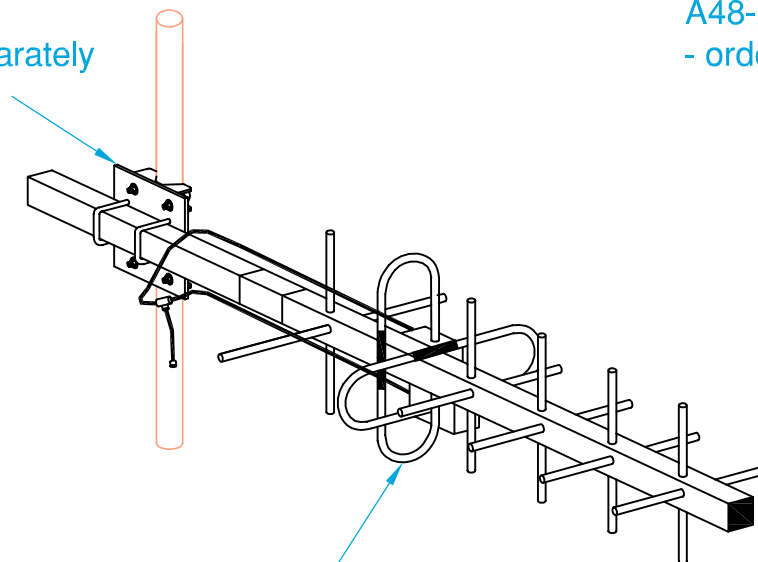


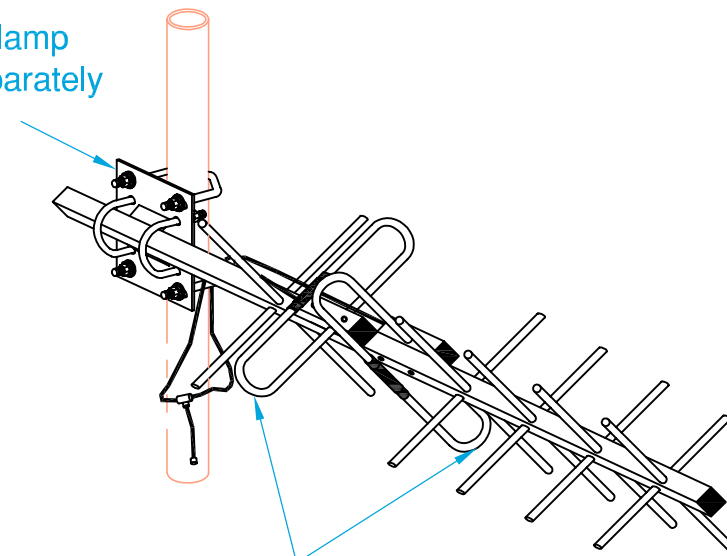
A48 Clamp  
- order separately



Trailing Dipole drain  
hole to face  
downwards

**Mounting of Yagi Antenna**  
**- Horizontally / Vertically Polarised**

A48-AM Clamp  
- order separately



Dipole drain holes to  
face downwards

**Mounting of Yagi Antenna**  
**- Cross Polarised**

**Installation Guide**

**Y406-CP**  
**Cross Polarised Yagi**

