

## LPY200-16SS

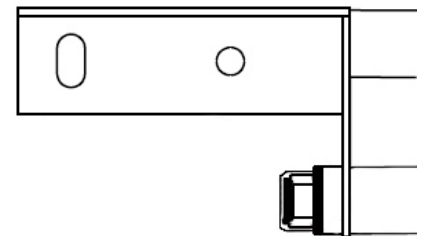
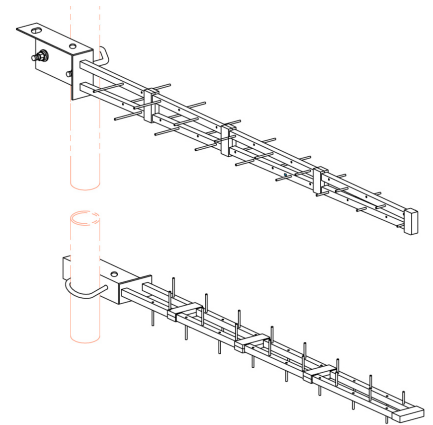
VHF Log periodic Yagi

VHF 200-250MHz

The LPY200-16SS log periodic Yagi provides broad bandwidth coverage across the VHF 200-250MHz, fitted standard with a 7/16" DIN female termination, other terminations available please consult ZCG for more information.

Coaxial feeder cable, connectors and other installation accessories are all available separately.

Specifications	LPY200-16SS
Construction	Fully-welded 304 stainless steel body and welded mount bracket
Frequency range	VHF 200-250MHz
Bandwidth	Full band
VSWR	1.2:1 across full band
Tuning	Factory
Gain	11dBi
Maximum Power	1 Kilowatt
Impedance (nominal)	50 Ohms
Polarisation	Mount horizontal or vertical as required using welded attached mounting bracket at rear
H Plane	98° - depending on frequency
E Plane	59° - depending on frequency
Front-to-Back Ratio	24 dB
DC Grounding	Yes
Connector	7/16" DIN female in rear of antenna
Boom Length	3.695m
Longest Element	861mm
Projected Area	0.149m <sup>2</sup>
Wind Load at 160kph	18.079kg, 0.117kN
Mounting hardware	Welded angle plate clamp capability up to 50mm - fitted to rear of antenna



LPY200-16SS 7/16" DIN female connector