



LPY600 series

Directional broadband log periodic antenna

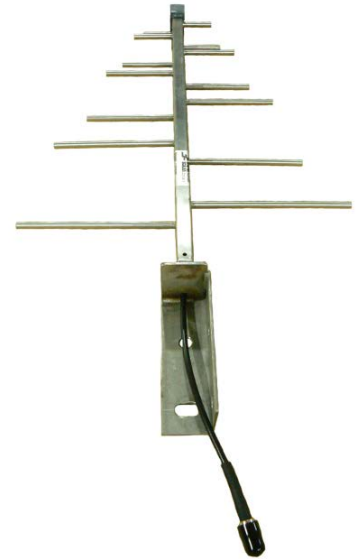
TE.T.RA / L.M.R. / C.B.R.S. / UHF 470-820MHz



The LPY600 series of log periodic antenna provide exceptionally broad bandwidth coverage across the UHF 500-800MHz or 470-820MHz frequency range.

Coaxial feeder cable, connectors and other installation accessories are all available separately.

	LPY600	LPY600-AL
Construction	Fully-welded 304 grade stainless steel	Fully-welded corrosion resistant aluminium
Frequency range	TE.T.RA / L.M.R. / C.B.R.S. / UHF 470-820MHz	
Bandwidth	Full frequency range	
VSWR	<2:1	
Tuning	Factory	
Gain	6dBi	
Maximum power	50 Watts	
Impedance - nominal	50 Ohms	
Polarisation	Mount horizontal or vertical as required	
H Plane	98° - depending on frequency	
E Plane	59° - depending on frequency	
Front-to-back ratio	24 dB	
DC grounding	Yes	
Connector	BNC female fitted to 200mm RG58 stranded or specify requirements	
Boom length	470mm	
Longest element	320mm	
Weight	2.25kg	740grams
Projected area	0.02m ²	
Wind load at 160kph	2.47kg, 0.024kN	
Mounting hardware supplied	Welded angle plate clamp and 50mm diameter stainless steel U-bolt	

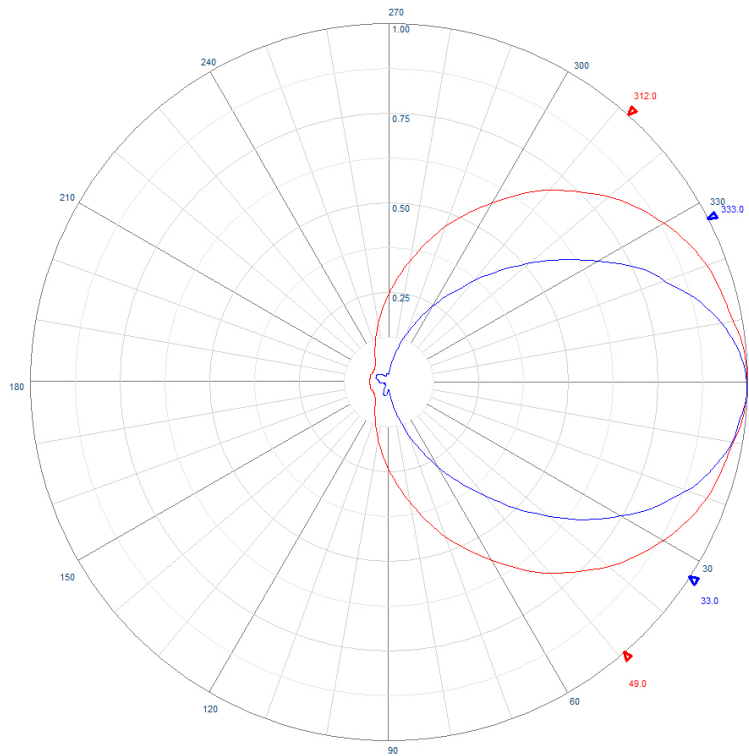




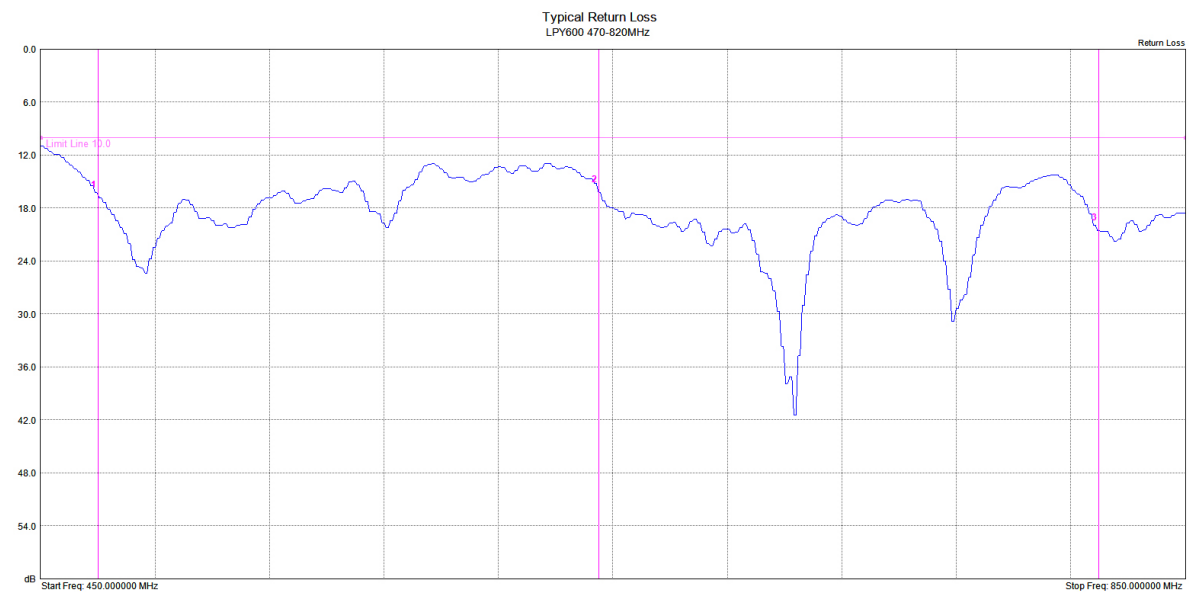
LPY600 series

Directional broadband log periodic antenna

TE.T.RA / L.M.R. / C.B.R.S. / UHF 470-820MHz



Example radiation pattern



Mix	Ref	Delta	Ref Freq	Ref Amp	Delta Freq	Delta Amp
1	<input checked="" type="checkbox"/>	<input type="checkbox"/>	470.000 MHz	16.83 dB	--	--
2	<input checked="" type="checkbox"/>	<input type="checkbox"/>	645.000 MHz	16.21 dB	--	--
3	<input checked="" type="checkbox"/>	<input type="checkbox"/>	820.000 MHz	20.58 dB	--	--
4	<input type="checkbox"/>	<input type="checkbox"/>	--	--	--	--

Typical Return Loss