



## S2B88-1CPH-RA

2-Stack internally phased vertical dipole array with 90° rear screen

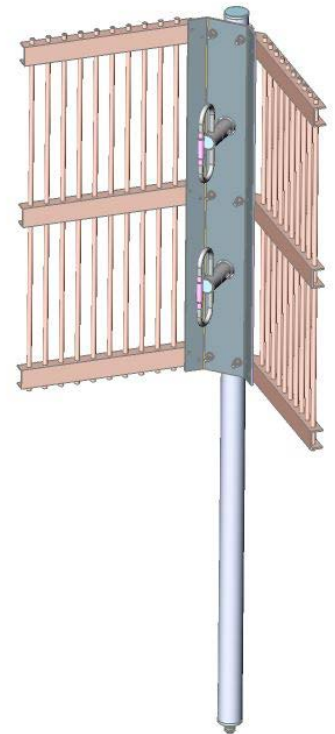
UHF 800-960 MHz



The S2B88-1CPH-RA dipole stack array with 90° rear screen is suitable for all applications within the 800-960 MHz frequency range. If a power rating higher than 250 Watts is required, please contact ZCG for assistance.

Mounting hardware, coaxial feeder cable, connectors and other installation accessories are all available separately.

Construction	Welded corrosion resistant aluminium boom, dipoles and rear screen, external coaxial cable and termination
Frequency range	800-960 MHz - UHF
Bandwidth	Specify any 80 MHz when ordering
VSWR	<1.5:1
Tuning	Factory
Gain	12 dBd
Maximum power	250 Watts - higher power ratings available, contact ZCG
Impedance - nominal	50 Ohms
DC grounding	Yes
Polarisation	Vertical only
Front-to-back	28dB
Passive IM 3rd order (2x20w)	< -120dBc
H Plane	50°
E Plane	28°
Connector	N-type female fitted to 1.0m cable bottom exit as standard, or specify termination requirements
Weight including rear screen	9.0kg
Wind load at 175kph	0.429kN, 43.773kg
Dimensions	Height: 1.5m, Width: 350mm
Mount section	750mm x 50mm diameter
Mounting hardware order separate	Parallel: 2 x UAM180L or UAM180UNI Right-angle: 2 x UAM90L or UAM90UNI
Installation tools required	17mm spanners for rear screen securing on boom

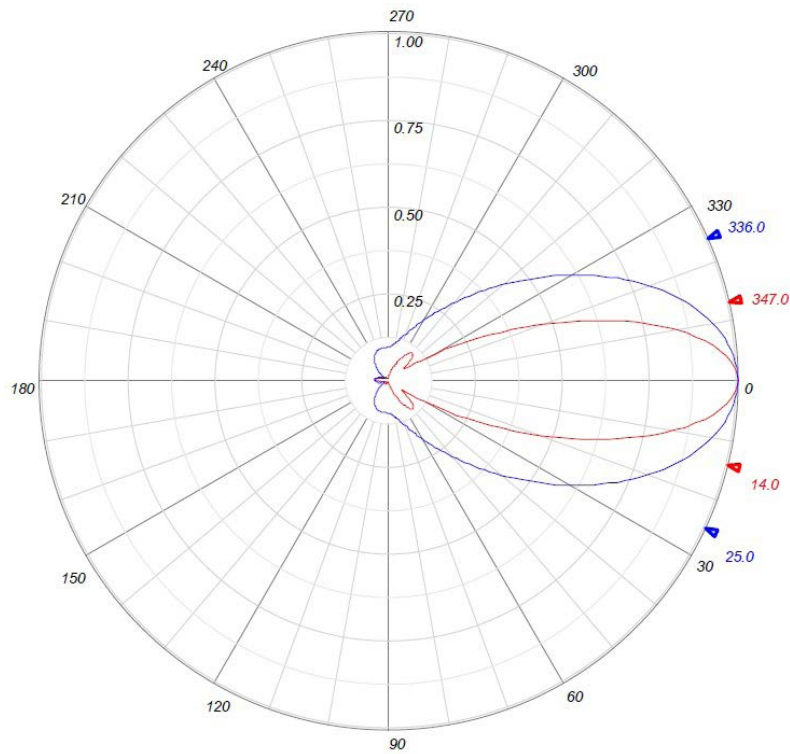




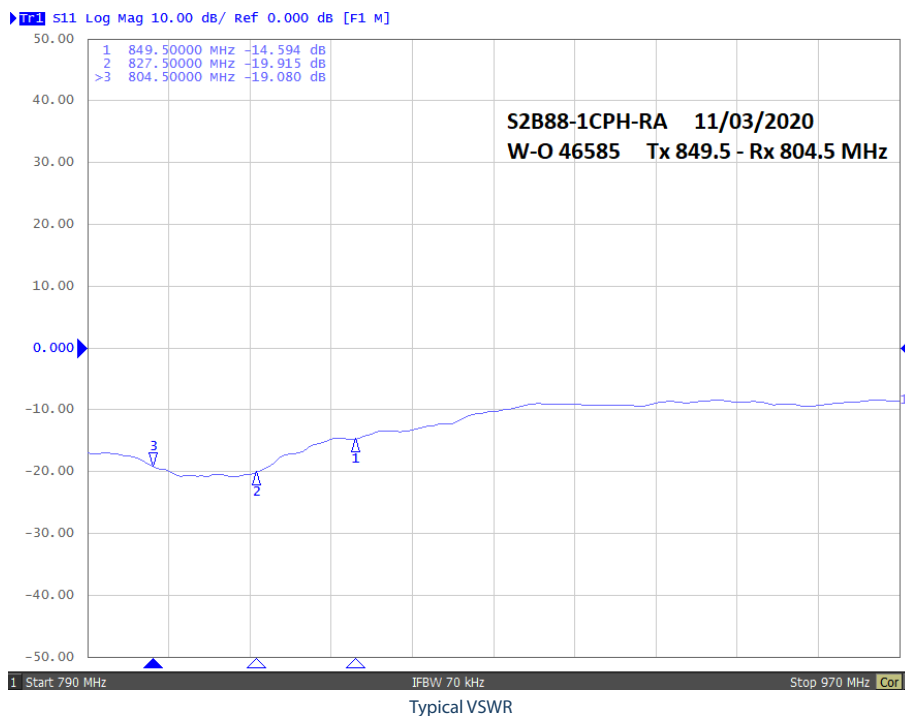
## S2B88-1CPH-RA

2-Stack internally phased vertical dipole array with 90° rear screen

UHF 800-960 MHz



Example radiation pattern





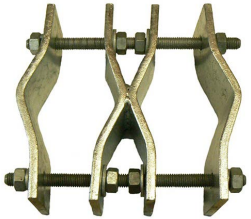
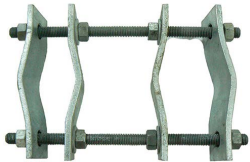
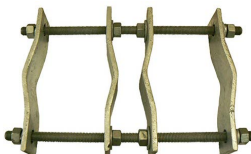
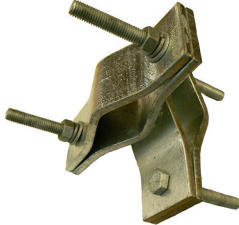
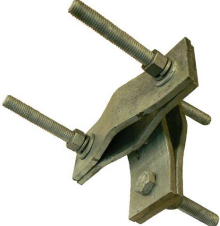

## S2B88-1CPH-RA

2-Stack internally phased vertical dipole array with 90° rear screen

UHF 800-960 MHz



### Suitable mounting hardware

 <p><b>SKU: UAM180L</b> 2 units recommended Galvanised steel parallel clamp Boom: 40-75mm capability Mount pole: 40-75mm capability</p>	 <p><b>SKU: UAM180UNI</b> 2 units recommended Galvanised steel large parallel clamp Boom: 40-70mm capability Mount pole: 40-90mm capability</p>
 <p><b>SKU: UAM180UNIL</b> 2 units recommended Galvanised steel extra large parallel clamp Boom: 40-90mm capability Mount pole: 60-115mm capability</p>	 <p><b>SKU: UAM90L</b> 2 units recommended Galvanised steel right-angle clamp Boom: 40-75mm capability Mount pole: 40-75mm capability</p>
 <p><b>SKU: UAM90UNI</b> 2 units recommended Galvanised steel large right-angle clamp Boom: 40-70mm capability Mount pole: 40-90mm capability</p>	 <p><b>SKU: UAM90LL</b> 2 units recommended Galvanised steel extra large right-angle clamp Boom: 60-115mm capability Mount pole: 60-115mm capability</p>

### Suitable feeder coaxial cable

 <p><b>SKU: 7890-2</b> RU600 Solid copper conductor, low loss coaxial cable CNT-600 / LMR-600™ equivalent (* times microwave) Available in 500m roll or alternatively request a custom cable assembly</p>	 <p><b>SKU: NM-8226-2</b> N-type male crimp connector for RU600 low loss, solid conductor Tri-metal plated</p>
 <p><b>SKU: ZCG1250</b> 1/2" corrugated shielding, foam dielectric coaxial cable <b>SKU: ZCG1250-A - Air Dielectric</b> Available in per metre (excl. Air) or 500m rolls or alternatively request a custom cable assembly</p>	 <p><b>SKU: NM1250</b> N-type male clamp connector for 1/2" flexible, corrugated shielded, coaxial cable Tri-metal plated</p>
 <p><b>SKU: ZCG7850</b> 7/8" corrugated shielding, foam dielectric coaxial cable <b>SKU: ZCG7850-A - Air Dielectric</b> Available in per metre, 500m roll or alternatively request a custom cable assembly</p>	 <p><b>SKU: NM7850</b> N-type male clamp connector for 7/8" flexible, corrugated shielded, coaxial cable Tri-metal plated</p>