

Y400SS-CP Series

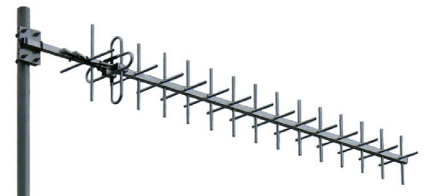
UHF 380-700MHz

Circular polarised Yagi

A cross polarised Yagi produces a circular elliptical radiation pattern which reduces unwanted reflection and refraction of signals. This improves transmit and receive performance, particularly in hilly terrain or where there are trees, wire fencing or steel structures in the signal path.

Mounting hardware, coaxial feeder cable, connectors and other installation accessories are all available separately.

Specifications	Y406-SS-CP	Y409-SS-CP	Y415-SS-CP
Construction	Fully-welded 304 stainless steel boom and dipoles and external phasing harness		
Frequency range	UHF 380-700MHz		
Bandwidth	Specify any 20MHz when ordering		
Tuning	Factory		
VSWR	<1.5:1		
Cross elements	6 each plane	9 each plane	15 each plane
Gain - nominal	9dBd per plane	11.5dBd per plane	14dBd per plane
Polarisation	Circular elliptical		
Maximum power	150 Watts		
Impedance	50 Ohms		
DC grounding	Yes		
H Plane each plane	50°	44°	37°
E Plane each plane	46°	36°	33°
Connector	N-type female output on 2-way phasing harness - supplied		
Boom length	Length: 1.2m	Length: 1.7m	Length: 2.5m
Widest element	400mm		
Weight	2.0kg	2.4kg	3.2kg
Projected area	0.078m ²	0.91m ²	0.127m ²
Wind load at 160kph	9.46kg, 0.093kN	10.97kg, 0.107kN	15.4kg, 0.151kN
Mounting hardware (order separate)	1 x S48-AM or consult ZCG 1 x strut kit recommended for Y409-SS-CP & Y415-SS-CP		



Y406-SS-CP Sample Patterns at 410 MHz

