

Y415-DP series

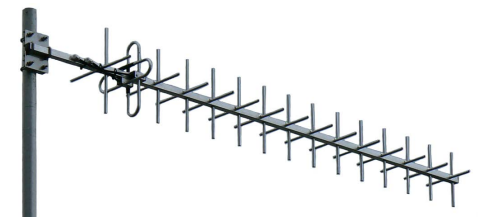
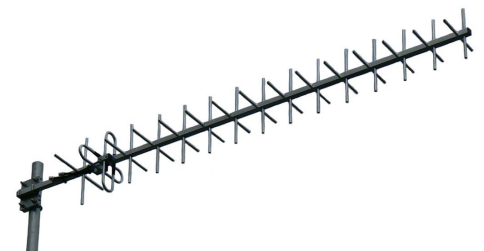
H & V dual polarised Yagi

UHF 380-480MHz

A dual polarised Yagi gives the ability of sending two signals from one Yagi with an offset of 90 degrees saving space on your mounting structure. This offset disallows the signals to interact with the other.

Mounting hardware, coaxial feeder cable, connectors and other installation accessories are all available separately.

Specifications	Y415-DP	Y415-SS-DP
Construction	Fully-welded aluminium boom and dipoles	Fully-welded 304 stainless steel boom and dipoles
Frequency range	TETRA/UHF 380- 480MHz	
Bandwidth	Specify any 20MHz per plane	
Tuning	Factory	Factory
Return loss, VSWR	<1.5:1 VSWR across specified bandwidth	
Cross elements	15 - each plane	
Gain - nominal	14 dBd per plane	
Polarisation	Horizontal and vertical	
Maximum power	150 Watts	150 Watts
Isolation	Minimum -25dB between polarisations	
Impedance	50 Ohms	50 Ohms
DC grounding	Yes	Yes
H Plane each plane	37°	37°
E Plane each plane	33°	33°
Connector	2 x N-type female fitted to 2 x 250mm RG59 cable tails	
Boom length	2.5 metres at 380MHz	
Longest element	0.4 metres at 380MHz	
Weight	900grams	
Projected area	0.107m ² at 380MHz	0.107m ² at 380MHz
Wind load at 160kph	12.9kg, 0.126kN @ 380MHz	12.9kg, 0.126kN @ 380MHz
Mounting hardware (order separate)	1 x A48 30-50mm 1 x A48-65 - 50-60mm	1 x S48 - 30-50mm 1 x S48-76 - 60-75mm or 1 x S48-90 70-90mm



2 x N-type female fitted as standard