

NEW

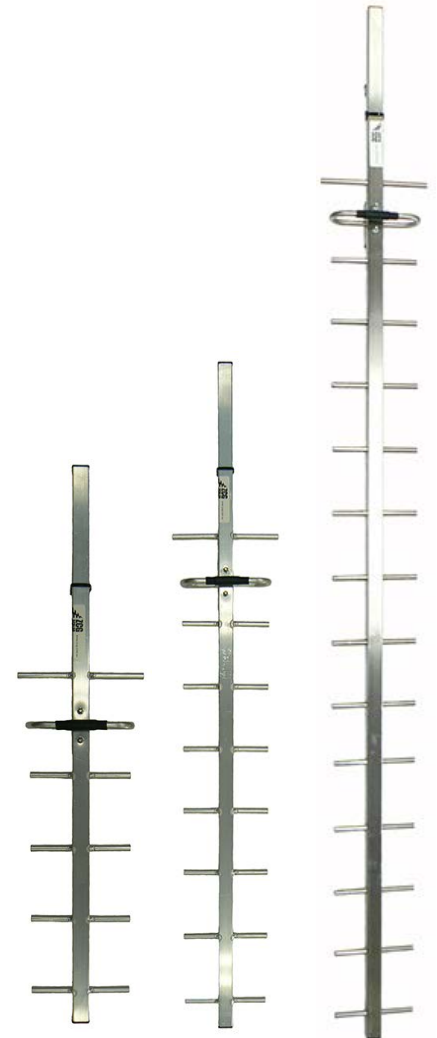
Y700 Series 4G LTE & 3G Square Boom Yagi 698-890 MHz

The Y700 series of 6-15 element square boom Yagi are designed and manufactured for optimum performance across the 4G LTE and 3G mobile phone frequency range 698-890MHz. Suitable for both mobile phone improvement and data transmit and receive.

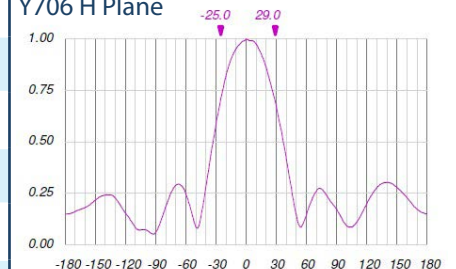
Key Features:

- Wide band coverage from 698MHz to 890MHz for 4GLTE & 3G
- Fully-welded construction for reliability
- Excellent front-to-back ratio
- Designed to minimize the generation of P.I.M.
- DC Grounding

Specifications	Y706	Y709	Y715	
Construction	Fully-welded corrosion resistant aluminium or 304 stainless steel boom add -SS, elements and dipole with external RG59 cable			
Frequency range	4G LTE & 3G - 698-890MHz			
Tuning	Factory			
VSWR	<1.8:1 full band			
Number of elements	6	9	15	
Gain - nominal	9dBd	11dBd	13dBd	
Polarisation	Mount horizontal or vertical or +/- 45° as required			
Maximum power	50 Watts			
Impedance - nominal	50 Ohms			
H Plane at 3dB	51°	42°	37°	
E Plane at 3dB	46°	34°	33°	
Front-to-back ratio	20dB			
Connector and cable	N-type female fitted to 250mm RG59 cable tail			
Boom length	0.9 metres	1.2 metres	1.55 metres	
Longest element	350mm			
Weight	Aluminium	0.6kg	0.9kg	1.3kg
	Stainless steel	1.1kg	1.6kg	2.6kg
Projected area	0.029m ²	0.032m ²	0.056m ²	
Wind load at 160kph	0.034kn, 3.488kg	0.038kn, 3.862kg	0.067kn, 6.793kg	
Mounting hardware order separate	S48 - 30-50mm capability, S48-76 - 50-76mm capability or S48-90 - 70-90mm capability YS1-48 strut kit - recommended for Y715 series			



Y706 H Plane



Y706 E Plane

