



Y815B2-DM series

2-stack broadband Yagi array

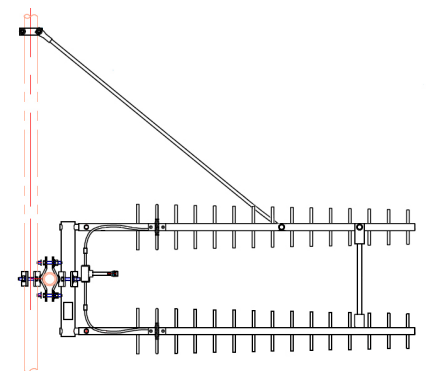
4G LTE, 4G, 3G or UHF 700-960 MHz



Y815B2-DM series are 2-stack Yagi arrays which produces a highly directional radiation pattern with high front-to-back ratio specifically designed for long distance point-to-point communication links.

Coaxial feeder cable, connectors and other installation accessories are all available separately.

	Y815B2-DM	Y815B2-DM-SS
Construction	Fully-welded aluminium	Fully-welded 304 grade stainless steel
Frequency range	700-960 MHz - LTE, 4G/3G or UHF compatible	
Bandwidth	Specify any 60 MHz within band when ordering	
VSWR	<1.6:1 across specified bandwidth	
Tuning	Factory	
Yagi's in array	2 x 15 element Yagi's	
Gain - nominal	17 dBd	
Polarisation	Vertically polarised Yagi's in Vertical mounting - stacked	
Maximum power	100 Watts	
Impedance	50 Ohms	
H Plane	28°	
E Plane	14°	
Front-to-back	18 dB	
Cable	2-way RG59 phasing harness - supplied	
Connector	N-type female fitted to phasing harness	
Boom length	1.85 metres	
Longest element	210mm	
Array weight	6.1kg	10kg
Projected area	0.170m ²	
Wind load at 160kph	0.203kN, 20.674kg	
Mounting hardware	1 x SRF-DM, 1 x UAM90L - supplied	



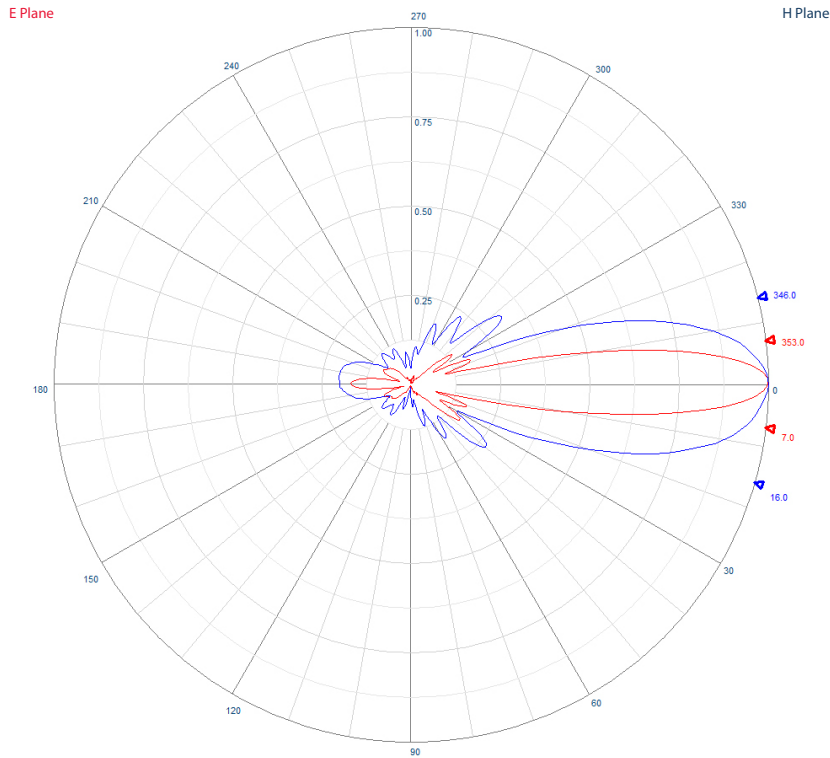
Y815B2-DM with included SRF-DM strut kit fitted to reduce mechanical downtilt and movement



Y815B2-DM series

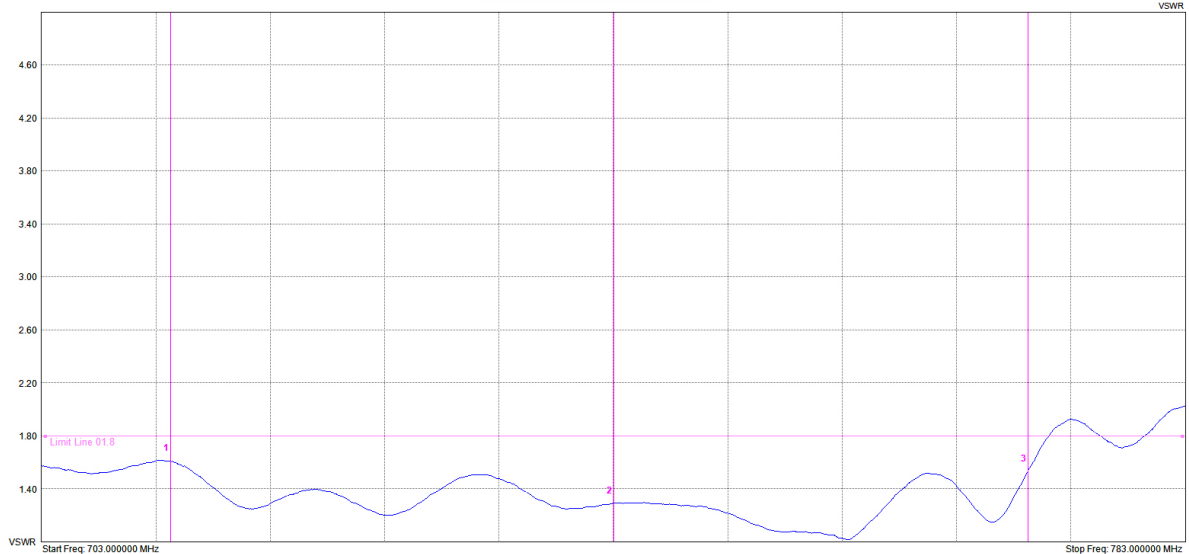
2-stack broadband Yagi array

4G LTE, 4G, 3G or UHF 700-960 MHz



Example radiation pattern

Typical VSWR
Y815B2-DM 700-960MHz with 60MHz bandwidth



Mir	Ref	Delta	Ref Freq	Ref Amp	Delta Freq	Delta Amp
1	<input checked="" type="checkbox"/>	<input type="checkbox"/>	712.000 MHz	1.61VSWR	--	--
2	<input checked="" type="checkbox"/>	<input type="checkbox"/>	743.018 MHz	1.29VSWR	--	--
3	<input checked="" type="checkbox"/>	<input type="checkbox"/>	772.000 MHz	1.53VSWR	--	--
4	<input type="checkbox"/>	<input type="checkbox"/>	--	--	--	--

Typical VSWR



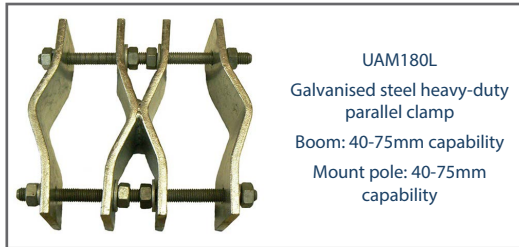


Y815B2-DM series

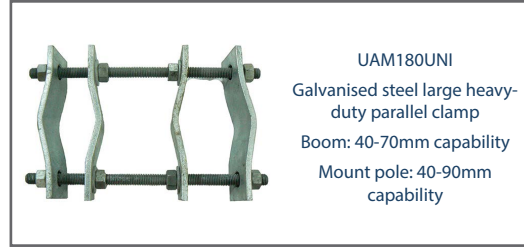
2-stack broadband Yagi array

4G LTE, 4G, 3G or UHF 700-960 MHz

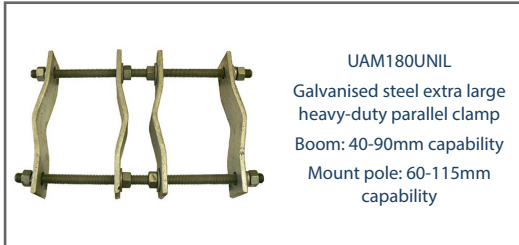
Alternate mounting hardware - order separate



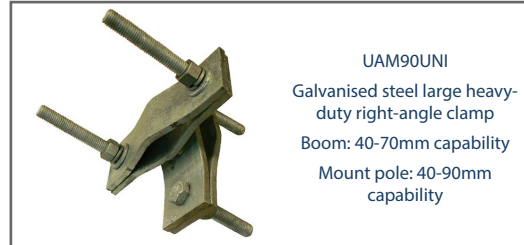
UAM180L
Galvanised steel heavy-duty parallel clamp
Boom: 40-75mm capability
Mount pole: 40-75mm capability



UAM180UNI
Galvanised steel large heavy-duty parallel clamp
Boom: 40-70mm capability
Mount pole: 40-90mm capability



UAM180UNIL
Galvanised steel extra large heavy-duty parallel clamp
Boom: 40-90mm capability
Mount pole: 60-115mm capability



UAM90UNI
Galvanised steel large heavy-duty right-angle clamp
Boom: 40-70mm capability
Mount pole: 40-90mm capability



UAM90LL
Galvanised steel extra large heavy-duty right-angle clamp
Boom: 60-115mm capability
Mount pole: 60-115mm capability

Suitable feeder coaxial cable and connectors



RU400 Solid copper conductor, low loss coaxial cable
CNT-400 / LMR-400™ equivalent
(* times microwave)
P/N 7890
Available in 100m, 300m or 500m rolls or alternatively request a custom cable assembly



N-type male crimp connector for RU400 low loss, solid conductor
P/N 8226
Tri-metal plated



1/2" super flexible helical shielded, foam dielectric coaxial cable
P/N ZCG1250SF
Available in per metre, or 500m rolls or alternatively request a custom cable assembly



N-type male clamp connector for 1/2" super flexible, helical shielded coaxial cable
P/N NM1250SF
Tri-metal plated



1/2" corrugated shielding, foam dielectric coaxial cable
P/N ZCG1250
Available in per metre, or 500m rolls or alternatively request a custom cable assembly



N-type male clamp connector for 1/2" flexible, corrugated shielded, coaxial cable
P/N NM1250
Tri-metal plated