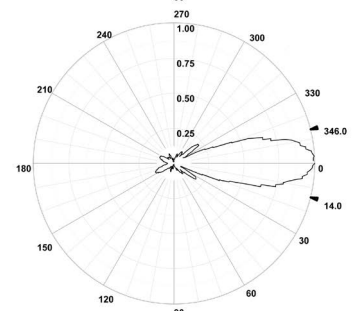
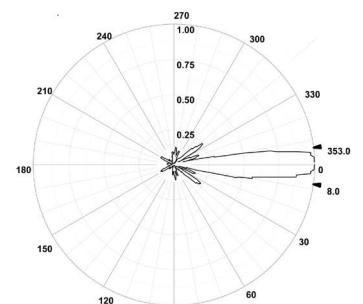
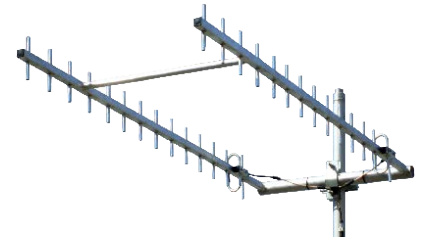


Y815B2-DM Series

UHF 700-960MHz 2-Stack Broadband Yagi Array

Y815B2-DM series are 2-stack Yagi arrays which produces a highly directional radiation pattern with high front-to-back ratio specifically designed for long distance point-to-point communication links.

Coaxial feeder cable, connectors and other installation accessories are all available separately.



Specifications	Y815B2-DMH	Y815B2-DM-SS
Construction	Fully-welded aluminium	Fully-welded 304 grade stainless steel
Frequency range	UHF 700-960MHz	UHF 700-960MHz
Bandwidth	Specify any 60MHz within band when ordering	
VSWR	<1.5:1 across specified bandwidth	
Tuning	Factory	Factory
Yagi's in array	2 x 15 element Yagi's	
Gain - nominal	17 dBd	17 dBd
Polarisation	Specify Horizontal or Vertical and bayed or stacked on order	
Maximum power	100 Watts	100 Watts
Impedance	50 Ohms	50 Ohms
H Plane	14°	14°
E Plane	28°	28°
Front-to-back	18 dB	18 dB
Cable Tail	2-way RG59 phasing harness (supplied)	
Connector	N-type female fitted to phasing harness	
Boom length	1.85 metres	1.85 metres
Longest element	210mm	210mm
Array weight	6.1Kg	10kg
Projected area	0.170m	0.170m
Mounting hardware	1 x SRF-DM, 1 x UAM90L (supplied)	