

Y400 Series Yagi's

Square Boom Fixed Frequency Yagi's

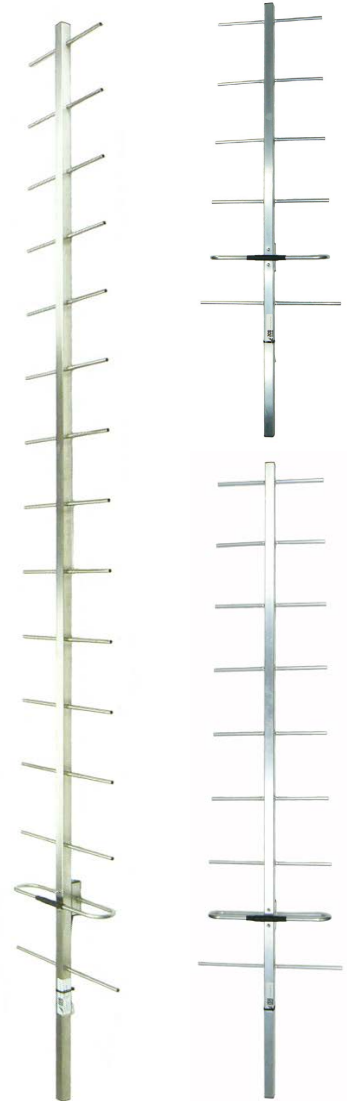
TE.T.RA / L.M.R. / C.B.R.S. / UHF 380-520MHz


In-stock
Ready to
Ship
* Signifies build to
order item

The Y400 series of directional square boom Yagi's are manufactured in "fixed frequency" models A, B, C, D, and E each tuned for optimum performance across a separate segment of the UHF range 380-520MHz.

Mounting hardware, coaxial feeder cable, connectors and other installation accessories are all available separately.

	Y406	Y409	Y415	
Fixed frequency models (select letter/frequency) Add letter when ordering	A = 380-400MHz * B = 400-420MHz * C = 420-450MHz *		D = 450-480MHz E = 480-520MHz *	
Construction	Aluminium, or add SS for 304 stainless steel version			
Tuning	Factory			
VSWR	<1.5:1 across fixed bandwidth			
Number of elements	6	9	15	
Gain - nominal	9dBd	11.5dBd	14dBd	
Polarisation	Mount Horizontal or Vertical as required			
Maximum power	150 Watts			
Impedance	50 Ohms			
H Plane at 3dB	50°	44°	37°	
E Plane at 3dB	46°	36°	33°	
Front-to-back ratio	17 dB			
Cable	250mm external RG59 from rear of dipole support - D series has 400mm			
Connector and cable	N-type female fitted as standard or specify requirements			
Boom length at 380MHz	1.2 metres	1.7 metres	2.5 metres	
Longest element	400mm			
Weight	Aluminium Stainless steel	0.7kg 1.6kg	1.0kg 2.3kg	1.3kg 3kg
Projected area	0.054m ²		0.081m ²	0.102m ²
Wind load at 160kph	0.064kN 6.485kg		0.081kN 8.278kg	0.121kN 12.337kg
Strut kit - order separate	Not required		Not required	YS1-48 or YS2-48
Mounting hardware order separate	1 x A48 for alum or 1 x S48 for S/Steel 30-50mm capability larger capable clamps available			



A48 - 30-50mm



S48 - 30-50mm



A48-65 - 50-65mm



S48-76 - 50-76mm or
S48-90 - 70-90mm

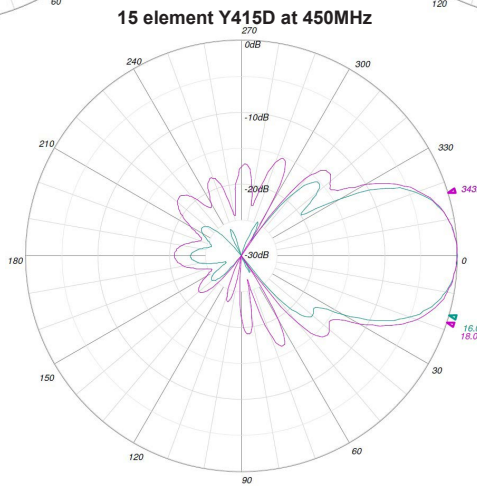
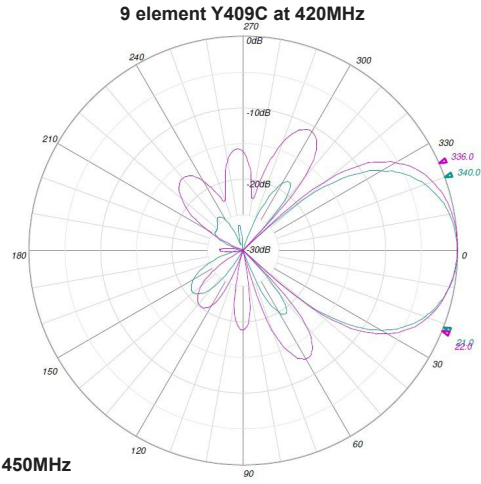
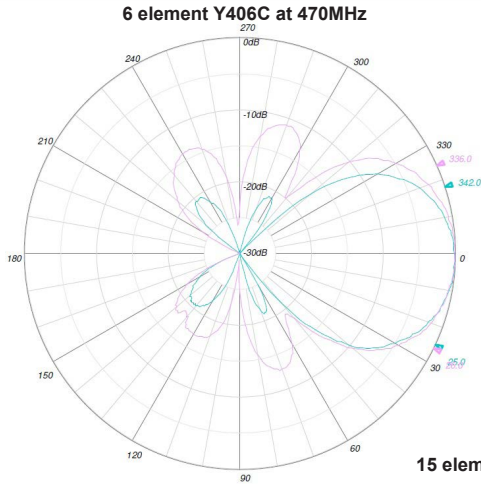


Y400 Series Yagi's

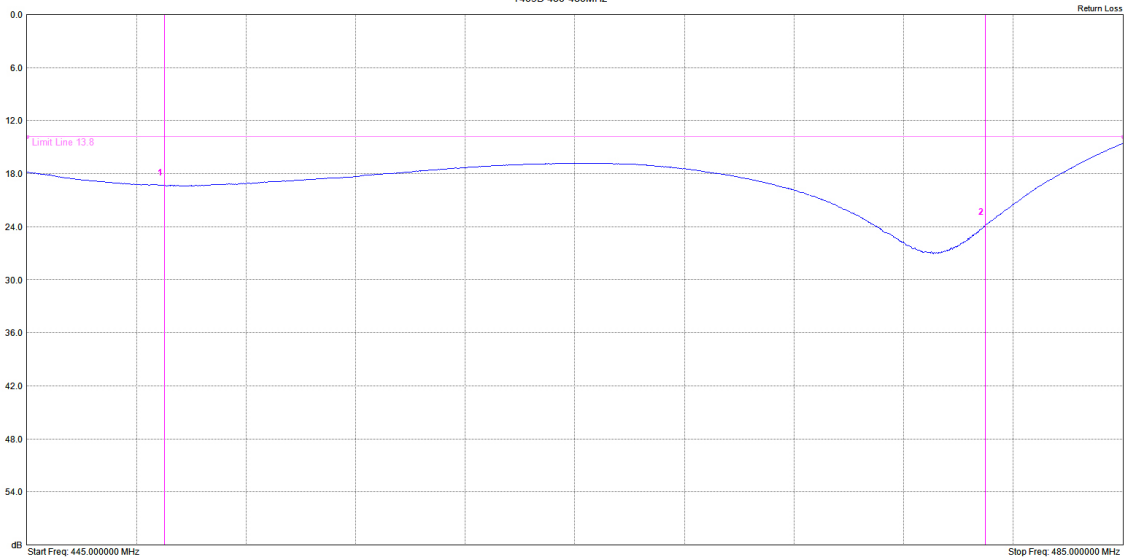
Square Boom Fixed Frequency Yagi's

TE.T.RA / L.M.R. / C.B.R.S. / UHF 380-520MHz

**In-stock
Ready to
Ship**
* Signifies build to
order item



Typical Return Loss
Y409D 450-480MHz



Mhz	Ref	Delta	Ref Freq	Ref Amp	Delta Freq	Delta Amp
1	<input type="checkbox"/>	<input type="checkbox"/>	450.000 MHz	19.31 dB	--	--
2	<input type="checkbox"/>	<input type="checkbox"/>	480.000 MHz	23.80 dB	--	--
3	<input type="checkbox"/>	<input type="checkbox"/>	--	--	--	--

Typical Return Loss - Y415 with 20MHz bandwidth