



Y400 Series Yagi's

Scaled square boom Yagi

TE.T.RA / L.M.R. / C.B.R.S. / UHF 380-520MHz

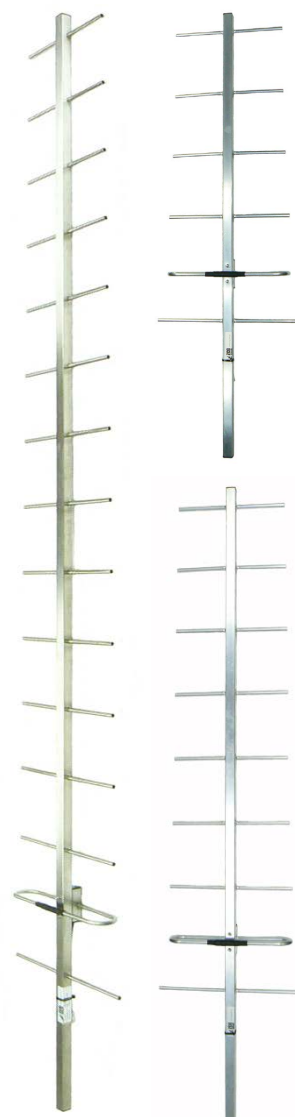


The Y400 series of directional base station yagi's range from 3 to 15 element configuration depending on your gain requirements.

Y406, Y409 and Y415 fixed frequency models A, B, C, D and E are also available, please see 'Y400ABCDE' specification sheet.

Mounting hardware, coaxial feeder cable, connectors and other installation accessories are all available separately.

		Y403	Y404	Y406	Y409	Y415
Construction		Fully-welded Aluminium, or add -SS for 304 grade stainless steel				
Frequency range		TE.T.RA / L.M.R. / C.B.R.S. / UHF 380-520MHz				
Bandwidth		Specify any 20MHz within frequency range when ordering				
Tuning		Factory				
VSWR		<1.5:1 across specified bandwidth				
Number of elements		3	4	6	9	15
Gain - nominal		6dBd	7.5dBd	9dBd	11.5dBd	14dBd
Polarisation		Mount horizontal or vertical as required				
Maximum power		150 Watts				
Impedance		50 Ohms				
H Plane at 3 dB		76°	62°	50°	44°	37°
E Plane at 3 dB		57°	54°	46°	36°	33°
Front-to-back ratio		15 dB	17 dB			
Connector and cable		N-type female fitted to 250mm RG59 cable tail				
Boom length at 380MHz		0.7 metres	0.9 metres	1.2 metres	1.7 metres	2.5 metres
Longest element		400mm				
Weight	Aluminium	0.4kg	0.5kg	0.7kg	1.0kg	1.3kg
	Stainless steel	0.9kg	1.2kg	1.6kg	2.3kg	3.0kg
Projected area		0.039m ²	0.041m ²	0.054m ²	0.081m ²	0.102m ²
Wind load at 160kph		0.047kN 4.751kg	0.049kN 5.005kg	0.064kN 6.485kg	0.081kN 8.278kg	0.121kN 12.337kg
Strut kit order separate		Not required				YS1-48 or YS2-48
Mounting hardware order separate		1 x A48 (30-50mm) or A48-65 (50-60mm) for aluminium or 1 x S48 (30-50mm) or S48-76(60-76mm) for stainless steel				



N-type female jack connector as standard

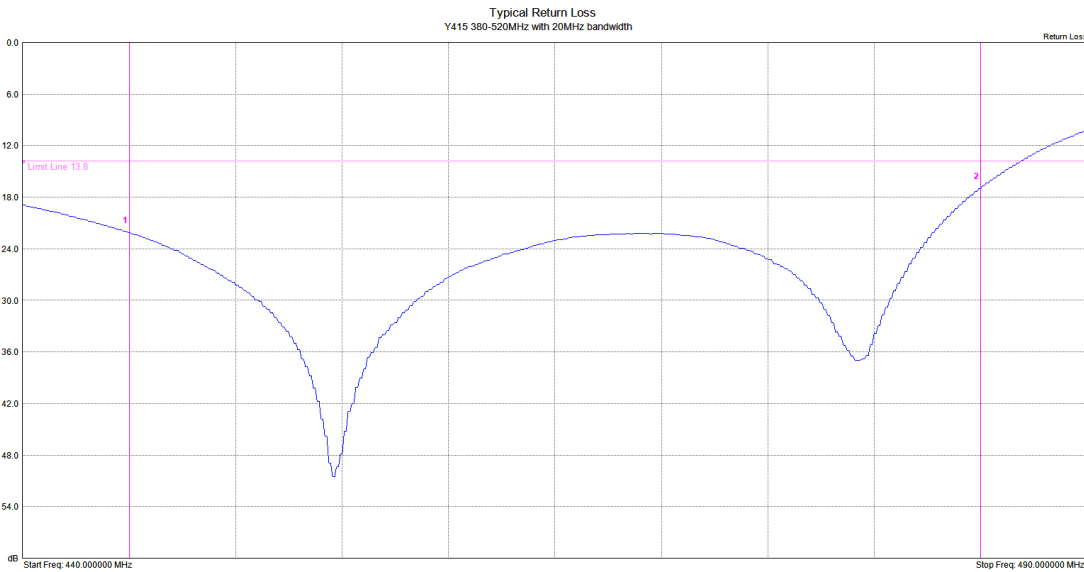
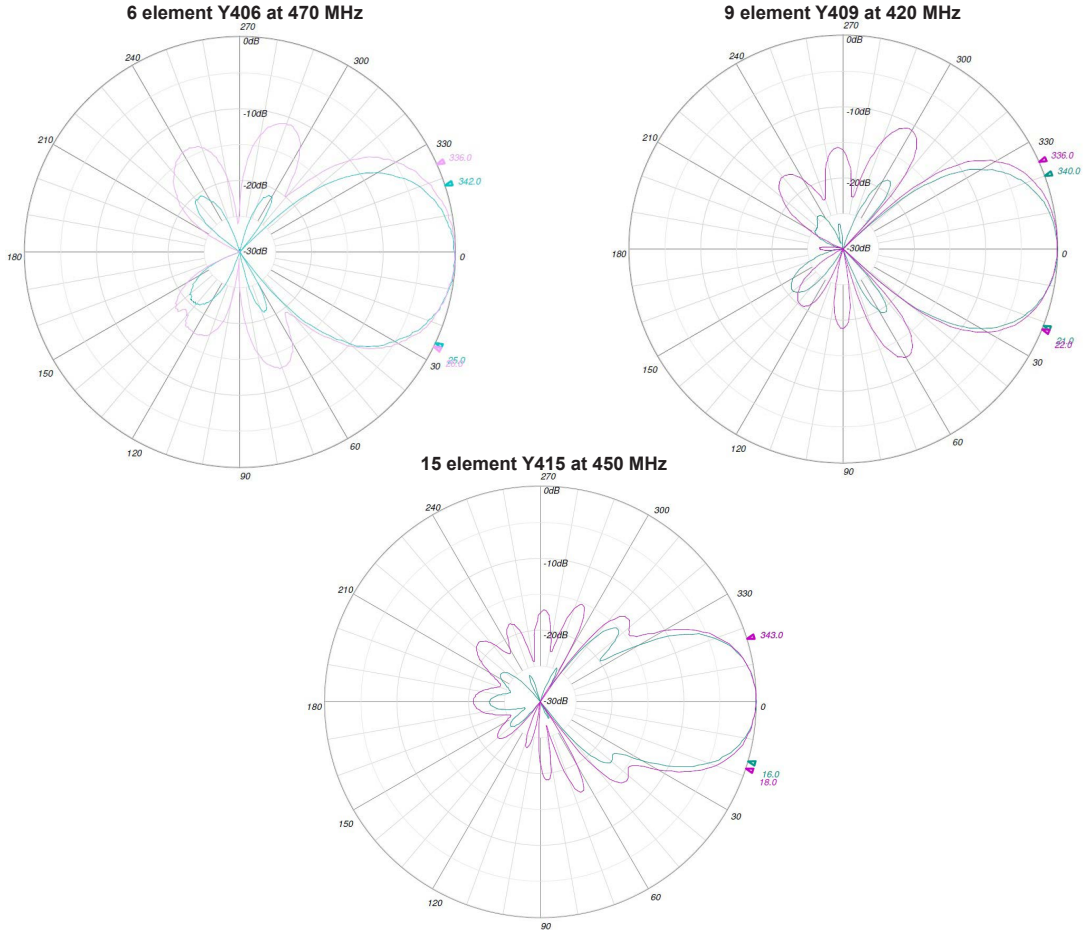




Y400 Series Yagi's

Scaled square boom Yagi

UHF 380-520MHz



Mkr	Ref	Delta	Ref Freq	Ref Amp	Delta Freq	Delta Amp
1	<input checked="" type="checkbox"/>	<input type="checkbox"/>	445.000 MHz	22.10 dB	--	--
2	<input checked="" type="checkbox"/>	<input type="checkbox"/>	485.000 MHz	17.01 dB	--	--
3	<input type="checkbox"/>	<input type="checkbox"/>	--	--	--	--

Typical Return Loss - Y415 with 20MHz bandwidth