

Y600 Series Yagi's

Scaled square boom Yagi's

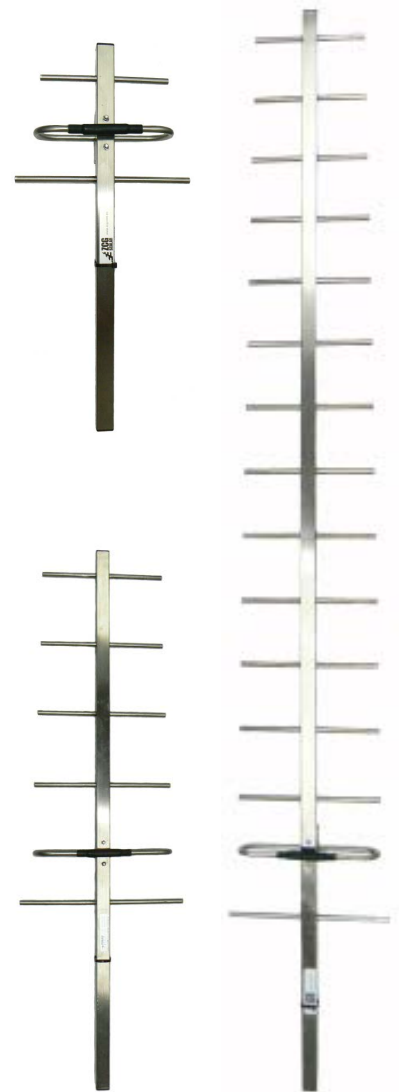
UHF 520-700MHz



The Y600 series of directional Yagi's range from 3 to 15 element configurations depending on your gain requirements.

Mounting hardware, coaxial feeder cable, connectors and other installation accessories are all available separately.

	Y603	Y604	Y606	Y615
Construction	Fully-welded corrosion resistant aluminium or 304 grade stainless steel boom, elements and dipole (specify material)			
Frequency range	UHF 520-700MHz			
Bandwidth	Specify 20MHz when ordering			
Tuning	Factory			
VSWR	<1.5:1 across specified bandwidth			
Number of elements	3	4	6	15
Gain - nominal	6dBd	7.5dBd	9dBd	14dBd
Polarisation	Mount horizontal or vertical as required			
Maximum power	150 Watts			
Impedance	50 Ohms			
H Plane at 3 dB	76°	62°	50°	38°
E Plane at 3 dB	57°	54°	46°	33°
Front-to-back ratio	15 dB		16 dB	
Connector	N-type female fitted to 250mm RG59 cable tail			
Boom length at 380MHz	700mm	1.0m	1.1m	1.9m
Longest element at 520MHz	288mm	294mm		254mm
Weight in aluminium	0.8kg	1.0kg	1.4kg	3.1kg
Weight in stainless steel	1.0kg	1.2kg	1.6kg	3.3kg
Projected area	0.028m ²	0.039m ²	0.058m ²	0.125m ²
Wind load at 160kph	2.0kg	3.0kg	4.0kg	16.0kg
Mounting hardware order separate	Aluminium - 1 x A48 or A48-65 Stainless steel 1 x S48, 1 x S48-76 or 1 x S48-90 1 x YS1-48 recommended for Y615			



A48 - 30-50mm



A48-65 - 50-65mm



S48 - 30-50mm



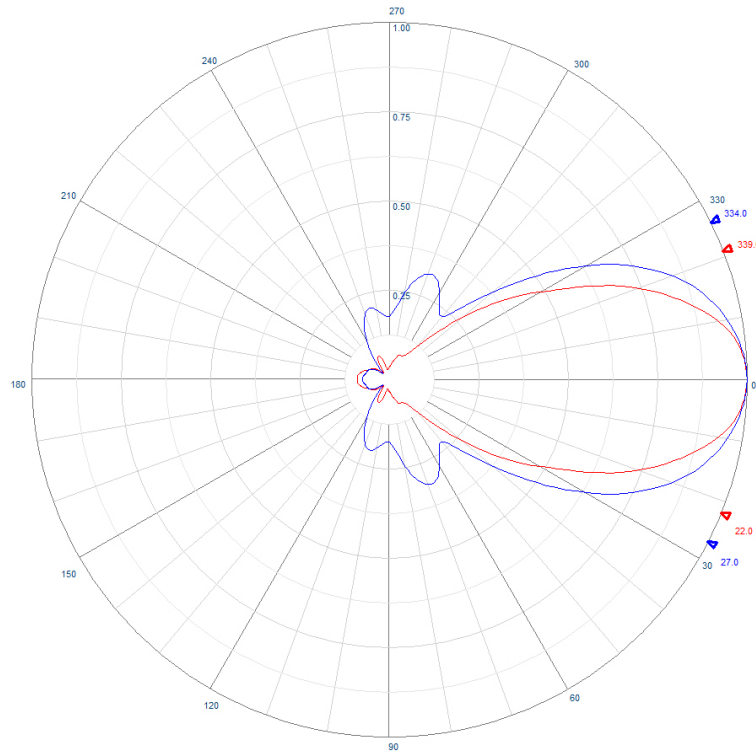
S48-70 - 50-70mm or
S48-90 - 70-90mm



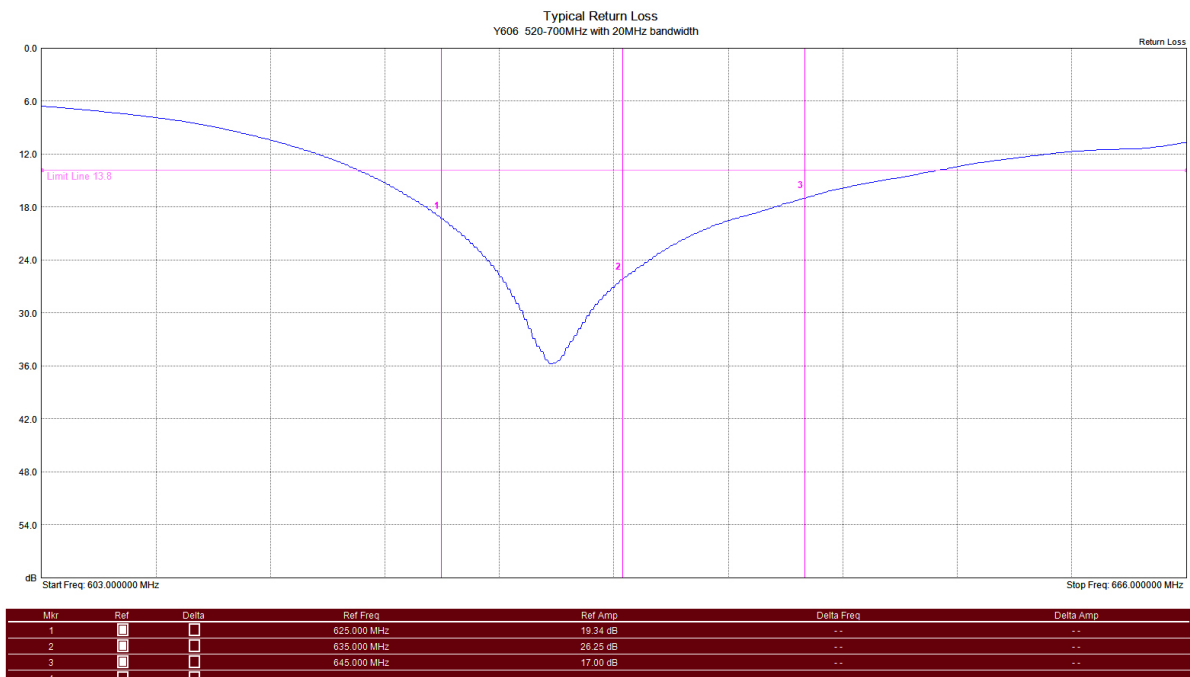
Y600 Series Yagi's

Scaled square boom Yagi's

UHF 520-700MHz



Example radiation pattern - Y606



Typical Return Loss - Y606