

Y800 Series Yagi's

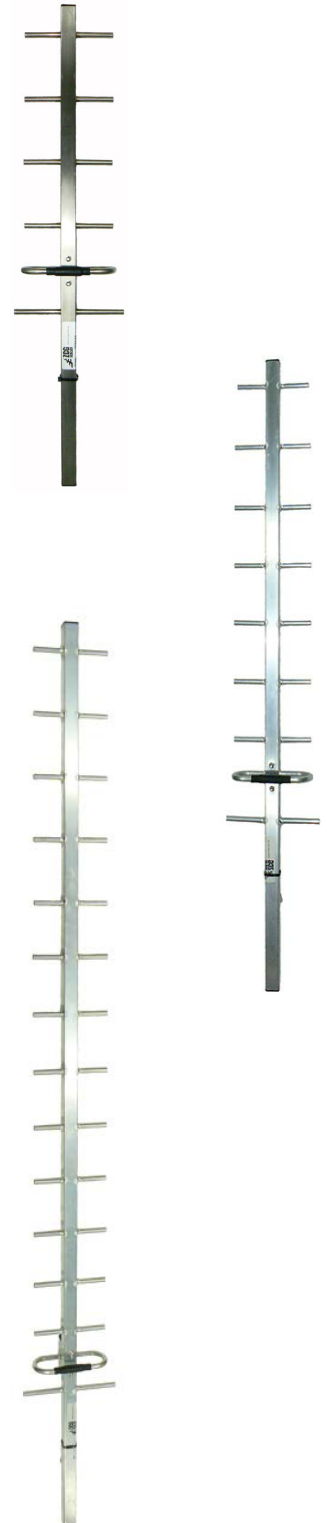
UHF 700-960MHz Scaled square boom Yagi

The Y800 series of UHF Yagi's can be manufactured to cover any 60MHz you require within the UHF or mobile phone frequency range 700-960MHz.

Fixed Frequency models A and C are also available to cover either Telstra 3G or Optus & Vodafone 3G mobile phone networks.

Mounting hardware, coaxial feeder cable, connectors and other installation accessories are all available separately.

Specifications	Y806	Y809	Y815
Construction	Fully-welded aluminium, or add -SS for 304 grade stainless steel		
Frequency range	UHF 700-960MHz		
Maximum bandwidth	Specify any 60MHz or Transmit and Receive on order		
Return loss, VSWR	<1.5:1 across specified bandwidth		
Tuning	Factory	Factory	Factory
Number of elements	6	9	15
Gain - nominal	9 dBd	11.5 dBd	14 dBd
Polarisation	Mount Horizontal or Vertical as required		
Maximum power	50 Watts	50 Watts	50 Watts
Impedance	50 Ohms	50 Ohms	50 Ohms
H Plane at 3dB	51°	42°	30°
E Plane at 3dB	46°	34°	28°
Front-to-back ratio	17.8 dB	15 dB	15 dB
Connector	N-type female fitted to 250mm RG59 cable tail		
Boom length at 850MHz	0.8 metres	0.97 metres	1.85 metres
Longest element	210mm	210mm	210mm
Weight in aluminium	0.5Kg	0.7Kg	1Kg
Weight in stainless steel	1.2Kg	1.5Kg	2.6Kg
Projected area	0.035m ²	0.054m ²	0.075m ²
Wind load at 160kph	4.5Kg	6.5Kg	9.5Kg
Mounting hardware (order separate)	1 x A48 for aluminium, 1 x S48 for stainless steel, and a strut kit for 15 element series		



Y800 Series Yagi's

UHF 700-960MHz Scaled square boom Yagi

The Y802 and Y803 series of fixed position Yagi's can be manufactured to cover any 60MHz you require within the UHF or mobile phone frequency range 700-960MHz.

Mounting hardware, coaxial feeder cable, connectors and other installation accessories are all available separately.

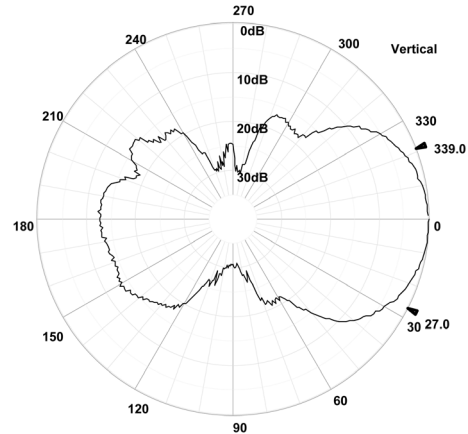
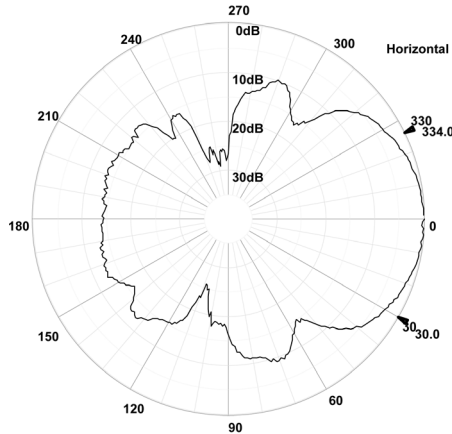
Specifications	Y802	Y803
Construction	Fully-welded aluminium, or add -SS for 304 grade stainless steel	
Frequency range	UHF 700-960MHz	
Maximum bandwidth	Any 60MHz (specify Transmit and Receive when ordering)	
Return loss, VSWR	<1.5:1 across specified bandwidth	
Tuning	Factory	Factory
Number of elements	2	3
Gain - nominal	3 dBd	4.5 dBd
Polarisation	Mount Horizontal or Vertical as required	
Maximum power	50 Watts	50 Watts
Impedance	50 Ohms	50 Ohms
H Plane at 3dB	81°	76°
E Plane at 3dB	64°	57°
Front-to-back ratio	dB	15 dB
Connector	N-type female fitted to 250mm RG59 cable tail	
Boom length at 700MHz	0.46 metres	0.55 metres
Longest element at 700MHz	218mm	214mm
Weight in aluminium	0.30Kg	0.32Kg
Weight in stainless steel	0.75Kg	0.8Kg
Projected area	0.015m ²	0.016m ²
Wind load at 160kph	1.8Kg, 0.018kN	1.97Kg, 0.019kN
Mounting hardware	1 x A48 for alum., 1 x S48 for S/Steel (order separately)	



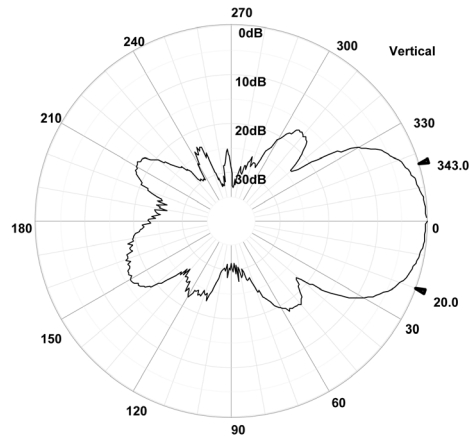
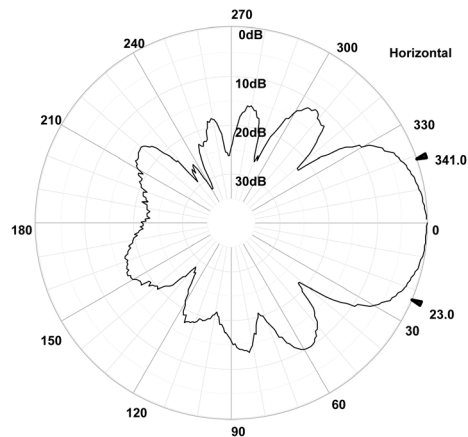
Y800 Series Yagi's

UHF 700-960MHz
Radiation Patterns

6 element Y806 at 880MHz



9 element Y809 at 880MHz



15 element Y815 at 960MHz

