

Y200-1722 Series

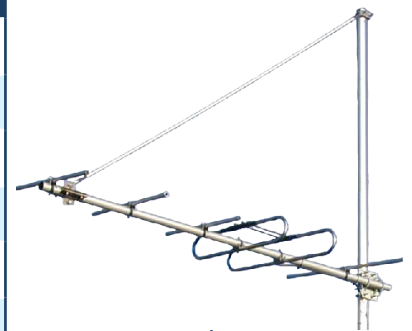
VHF TV Dual Dipole Yagis

174-230MHz

The Y200-1722 series of dual dipole yagis are designed and manufactured to cover the full VHF TV channel range 6 to 12 (174 to 230MHz). They are the ideal solution for off air receive and low power transmit applications.

Mounting hardware, coaxial feeder cable, connectors and other installation accessories are all available separately.

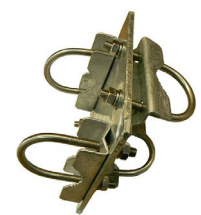
Specifications	Y204-1722	Y206-1722	Y209-1722
Construction	Aluminium , or add SS for 304 grade stainless steel		
Frequency range	VHF TV 174-230MHz - Channel 6-12		
Bandwidth	Full band	Full band	Full band
Tuning	Factory	Factory	Factory
Return loss, VSWR	Better than -20dB, <1.2:1 across full band		
Number of elements	4	6	9
Gain - nominal	6 dBd	7.5 dBd	10.5 dBd
Polarisation	Mount horizontal or vertical as required		
Maximum power	250 Watts	250 Watts	250 Watts
Impedance	50 Ohms	50 Ohms	50 Ohms
H Plane	96°	80°	48°
E Plane	82°	64°	42°
Front-to-back ratio	17 dB	18 dB	20 dB
Connector	N-type female fitted to 1.4 metres RG213		
Boom length	1.5 metres	2.34 metres	3.1 metres
Longest element	800mm	850mm	850mm
Weight	Alum - 7.0kg S/Steel - 9.1kg	Alum - 8.0kg S/Steel - 10.4kg	Alum - 11.0kg S/Steel - 14.3kg
Projected area	0.134m ²	0.143m ²	0.205m ²
Wind load at 160kph	8.9kg, 0.087kN	17.3kg, 0.169kN	24.8kg, 0.243kN
Strut kit (order separate)	YS1-23 - single tension		YS2-23 - dual tension
Mounting hardware (order separate)	1 x Y2300 for aluminium models 1 x Y2300-SS for stainless steel models		
Warranty	2 Years	2 Years	2 Years



Y206-1722 with tension strut



Y206-1722 with tension strut and double compression strut.



Y2300