



Y200-1722SS-75 Series

Mast amplified television directional broadband Yagi

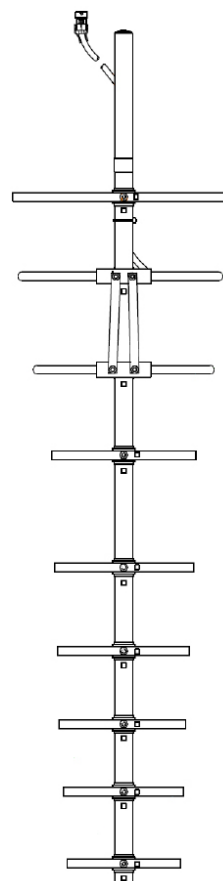
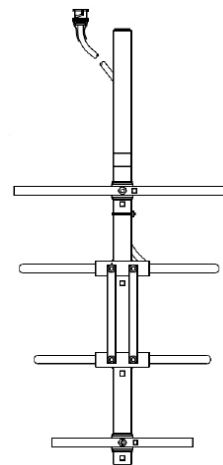
VHF 174-230 MHz Channels 6 to 12



The Y200-1722SS-75, 75 Ohm VHF TV Yagi antennas are specifically designed and manufactured for Mast Amplified TV (MATV) receive systems at professional broadcast installations.

Mounting clamps, coaxial feeder cable, connectors and other installation accessories are all available separately.

	Y204-1722SS-75	Y209-1722SS-75
Construction	304 grade stainless steel boom, elements, dual dipole assembly and link bars, RG11 coaxial cable and nickel plated termination	
Frequency range	174-230 MHz - M.A.T.V. band 3, Channel 6-12	
Bandwidth	Full frequency range stated - 56 MHz	
VSWR	<1.5:1	
Tuning	Factory	
Number of elements	4	9
Gain - nominal	6 dBd	10.5 dBd
Polarisation	Mount horizontal or vertical as required	
Maximum power	200 Watts	
Impedance	75 Ohms	
H Plane	96°	48°
E Plane	82°	42°
DC grounding	Yes	
Front-to-back ratio	-20 dB	
Connector	BNC male fitted to 1.4 metres RG11 cable, rear exit from rear dipole assembly	
Boom length	1.591 metres	3.1 metres
Longest element	820mm	850mm
Weight	9.1kg	14.3kg
Projected area	0.164m ²	0.205m ²
Wind load at 160kph	8.9kg, 0.087kN	24.8kg, 0.243kN
Strut Kit (recommended)	YS2-C28 (order separate)	
Mounting hardware	1 x Y2300-SS (order separate)	
Warranty	2 Years	

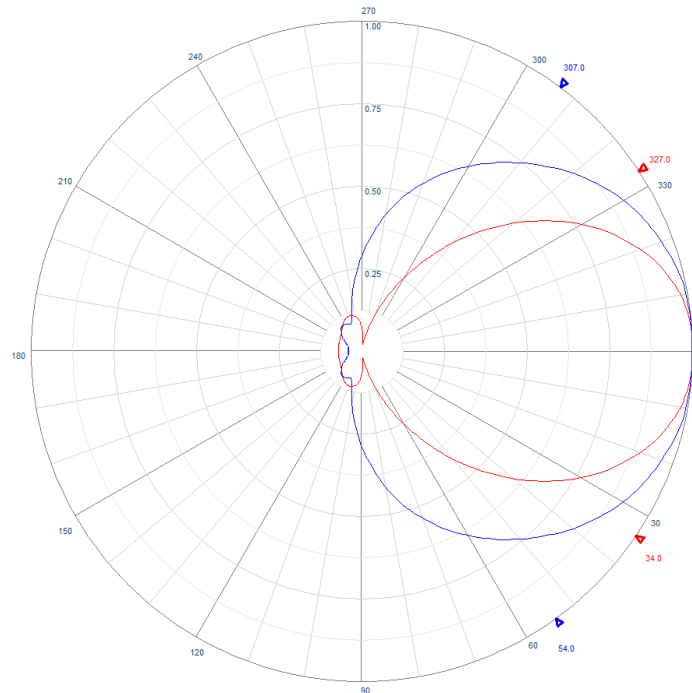




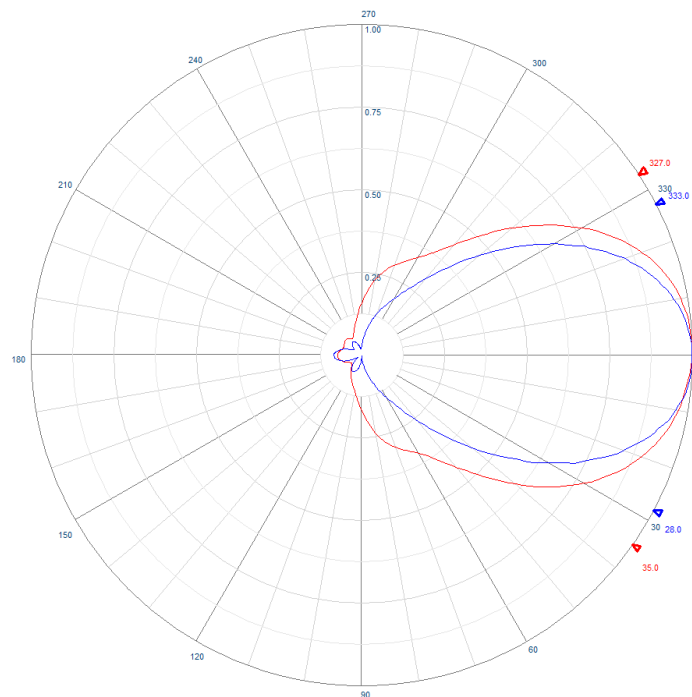
Y200-1722SS-75 Series

Mast amplified television directional broadband Yagi

VHF 174-230 MHz Channels 6 to 12



Y204-1722 radiation pattern



Y209-1722 radiation pattern



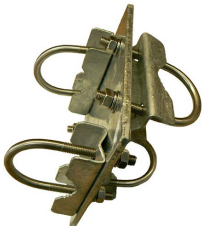
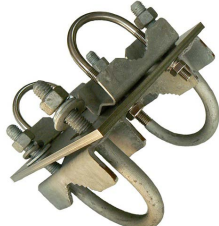

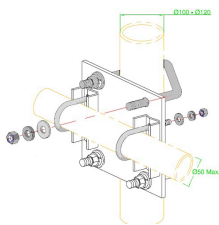
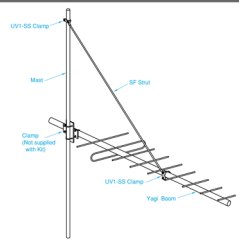
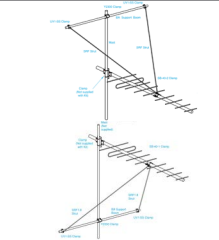
Y200-1722SS-75 Series

Mast amplified television directional broadband Yagi

VHF 174-230 MHz Channels 6 to 12



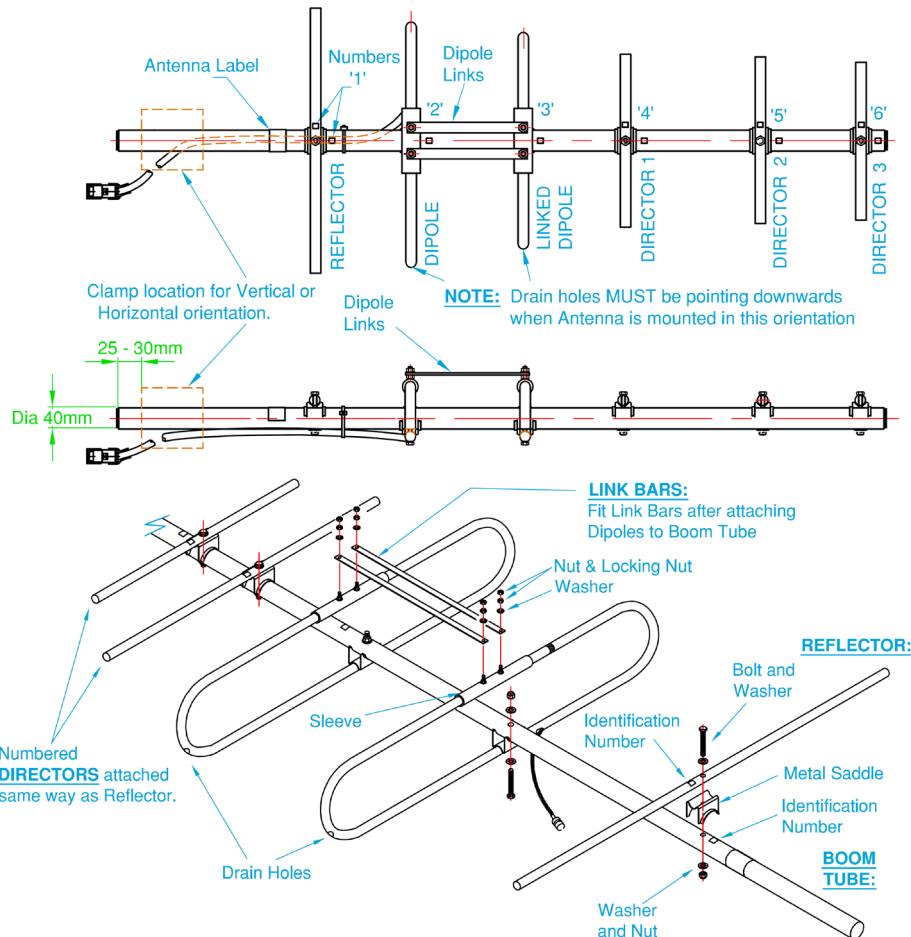
Suitable mounting hardware

 <p>Y2300 Galvanised steel right-angle round boom Yagi clamp Boom: 30-50mm capability Mount pole: 30-50mm capability Also available in stainless steel</p>	 <p>Y2300-L Galvanised steel large right-angle round boom Yagi clamp Boom: 32-50mm capability Mount pole: 40-75mm capability Also available in stainless steel</p>
 <p>Y2300-XL Galvanised steel extra large right-angle round boom Yagi clamp Boom: 32-50mm capability Mount pole: 50-90mm capability Also available in stainless steel</p>	 <p>C-125 Galvanised steel extra large right-angle round boom Yagi clamp Boom: 32-50mm capability Mount pole: 100-125mm capability</p>
 <p>YS1-23 Single tension strut kit includes strut mounting hardware.</p>	 <p>YS2-23 Dual tension strut kit includes strut mounting hardware and support boom. YS2-23C Dual compression strut kit includes strut mounting hardware and support boom.</p>

Y200-1722SS-75 Series

Mast amplified television directional broadband Yagi

VHF 174-230 MHz Channels 6 to 12

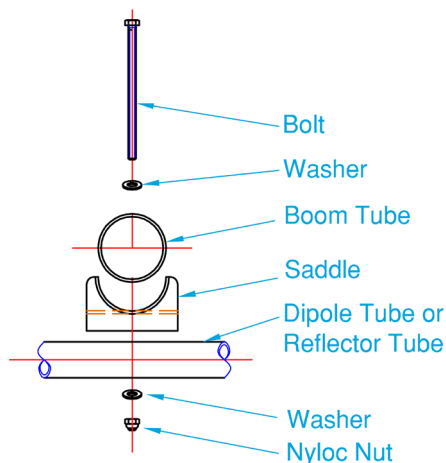


Installation Instructions:

1. Fit both Dipoles to the Boom Tube using Bolts & Washers through Dipole Tube, Saddle, Washer & 'Nyloc' Nut matching the assembly numbers shown in the diagram.
2. Note that Drain Holes in both Dipoles must be on the same side.
3. Fit Link Bars between both Dipoles. Install Link Bars onto Bolts, fit Washers & Nuts then secure with locking Nut.
4. Individually fit all other Element Tubes to Boom, matching corresponding Numbers on Element and Boom.
5. Strap Cable to Boom using Cable Ties (not provided) or similar.
6. Mounting can be **HORIZONTAL or VERTICAL polarisation**:

For **VERTICAL polarisation**, make sure the **Drain Holes** in both Dipoles are facing **downwards**.

For **HORIZONTAL polarisation**, mount the Yagi antenna with **Cable entry slot downwards**.



Typical Assembly