

Y600TV Series

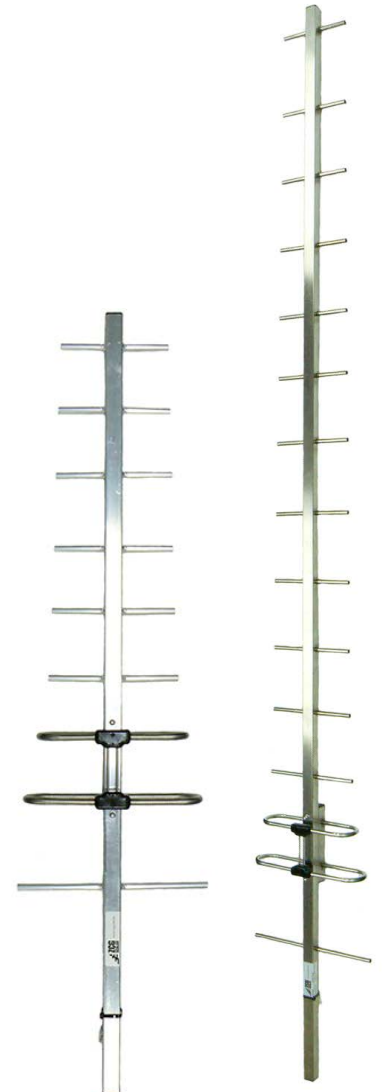
UHF TV Dual Dipole Yagis

520-700MHz

The Y600-TV series of dual dipole yagis are designed and manufactured to deliver genuine broadband coverage of the UHF TV Band IV and V.

Mounting hardware, coaxial feeder cable, connectors and other installation accessories are all available separately.

Specifications	Y609TV	Y615TV
Construction	Aluminium, or add SS for 304 grade stainless steel	
Frequency range	UHF TV band IV and V 520-700MHz	
Bandwidth	Specify 15 consecutive channels/ 105MHz when ordering	
Return loss, VSWR	Better than -20dB, <1.2:1 across specified bandwidth	
Tuning	Factory	Factory
Number of elements	9	15
Gain (nominal)	10.5 dBd	12.1 dBd
Polarisation	Mount horizontal or vertical as required	
Maximum power	50 Watts	50 Watts
Impedance	50 Ohms	50 Ohms
H Plane	46	42
E Plane	40	33
DC grounding	Yes	Yes
Front-to-back ratio	20 dB	20 dB
Connector & cable	N-type female fitted to 300mm RG58 low loss	
Boom length	1.2 metres	1.85 metres
Widest element	280mm	280mm
Weight	Aluminium - 0.8kg Stainless steel - 1.5kg	Aluminium - 1.3kg Stainless steel - 2.5kg
Projected area	0.060m	0.088m
Wind load at 160kph	7.3kg, 0.072kN	8.4kg, 0.083kN
Strut kit (recommended)	None required	YS1-48 (order separately)
Mounting hardware (order separate)	1 x A48 for Alum, 1 x S48 for Stainless steel - 30-50mm pole 1 x A48-65 50-60mm or 1 x S48-76 - 60-75mm pole	



A48



S48-76