

ZSL Series

Horizontal UHF TV Slot

Page 1 of 3

Featuring a horizontal radiation pattern and high gain, the ZSL-5262 series of slot antennas are designed for UHF TV broadcast.

Mounting hardware, coaxial feeder cable, connectors and other installation accessories are all available separately.

Specifications	ZSL5262-LP	ZSL5262-MP	ZSL5262-HP
Construction	White radome, aluminium mount tube		White radome, flange mount
Frequency range	520-620MHz - Ch 27-40		
Bandwidth	Full band	Full band	Full band
Tuning	Factory	Factory	Factory
Return loss, VSWR	Better than -20dB, <1.2:1 across channel range		
Gain	9.5 dBd	9.5 dBd	9.5 dBd
Maximum TV power	200 Watts	2 Kilowatts	3 Kilowatts
Impedance	50 Ohms	50 Ohms	50 Ohms
DC grounding	Yes	Yes	Yes
Polarisation	Horizontal	Horizontal	Horizontal
Connector (fitted)	N-type female	7/16" DIN female	7/8" EIA
Height	3.9 metres	3.9 metres	3.2 metres
Weight	18Kg	20Kg	21.5Kg
Radome diameter	250mm	250mm	250mm
Mount tube	63mm	63mm	Flange plate
Projected area	0.557m ²	0.557m ²	0.673m ²
Wind load at 160kph	67.5Kg, 0.662kN	67.5Kg, 0.662kN	81.5Kg, 0.799kN
Mounting hardware	2 x UAM180L (order separately)		8 x 18mm bolts (not supplied)
Warranty	2 Years	2 Years	2 Years



ZSL Series

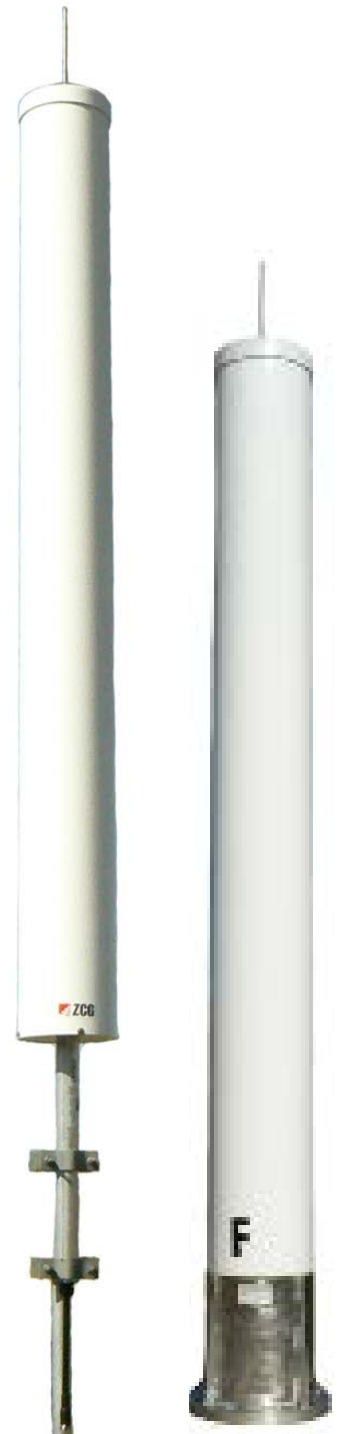
Horizontal UHF TV Slot

Page 2 of 3

Featuring a horizontal radiation pattern and high gain, the ZSL-6172 series of slot antennas are designed for UHF TV broadcast.

Mounting hardware, coaxial feeder cable, connectors and other installation accessories are all available separately.

Specifications	ZSL6172-LP	ZSL6172-MP	ZSL6172-HP
Construction	White radome, aluminium mount tube		White radome, flange mount
Frequency range	610-720MHz - Ch 40-54		
Bandwidth	Full band	Full band	Full band
Tuning	Factory	Factory	Factory
Return loss, VSWR	Better than -20dB, <1.2:1 across channel range		
Gain	9.5 dBd	9.5 dBd	9.5 dBd
Maximum TV power	200 Watts	2 Kilowatts	3 Kilowatts
Impedance	50 Ohms	50 Ohms	50 Ohms
DC grounding	Yes	Yes	Yes
Polarisation	Horizontal	Horizontal	Horizontal
Connector (fitted)	N-type female	7/16" DIN female	7/8" EIA
Height	2.7 metres	2.7 metres	2.2 metres
Weight	15Kg	15Kg	18Kg
Radome diameter	140mm	140mm	140mm
Mount tube	63mm	63mm	Flange plate
Projected area	0.27m ²	0.27m ²	0.261m ²
Wind load at 160kph	32.1Kg, 0.315kN	32.1Kg, 0.315kN	31Kg, 0.31kN
Mounting hardware	2 x UAM180L (order separately)		8 x 18mm bolts (not supplied)
Warranty	2 Years	2 Years	2 Years



ZSL Series

Horizontal UHF TV Slot

Page 3 of 3

Featuring a horizontal radiation pattern and high gain, the ZSL-7182 series of slot antennas are designed for UHF TV broadcast.

Mounting hardware, coaxial feeder cable, connectors and other installation accessories are all available separately.

Specifications	ZSL7182-LP	ZSL7182-MP	ZSL7182-HP
Construction	White radome, aluminium mount tube		White radome, flange mount
Frequency range	708-820MHz - Ch 54-69		
Bandwidth	Full band	Full band	Full band
Tuning	Factory	Factory	Factory
Return loss, VSWR	Better than -20dB, <1.2:1 across channel range		
Gain	9.5 dBd	9.5 dBd	9.5 dBd
Maximum power	200 Watts	2 Kilowatts	3 Kilowatts
Impedance	50 Ohms	50 Ohms	50 Ohms
DC grounding	Yes	Yes	Yes
Polarisation	Horizontal	Horizontal	Horizontal
Connector (fitted)	N-type female	7/16" DIN female	7/8" EIA
Height	2.2 metres	2.2 metres	2 metres
Weight	10Kg	10Kg	10Kg
Radome diameter	110mm	110mm	110mm
Mount tube	63mm	63mm	Flange plate
Projected area	0.21m ²	0.21m ²	0.21m ²
Wind load at 160kph	33Kg, 0.34kN	33Kg, 0.34kN	33Kg, 0.34kN
Mounting hardware	2 x UAM180L (order separately)		8 x 18mm bolts (not supplied)
Warranty	2 Years	2 Years	2 Years

