

Y2650 Series

Radome enclosed directional point-to-point Yagi B.R.S. / UHF 2.65GHz



The Y2650 series of mast mount Yagi's are specifically designed for directional point-to-point 2.65GHz wireless data transmit and receive applications such as B.R.S. The enclosed design ensures protection from damage or water ingress, increasing the service life of these antennas.

Coaxial feeder cable, water-proofing, bird proofing, adaptors and other installation accessories are all available separately.



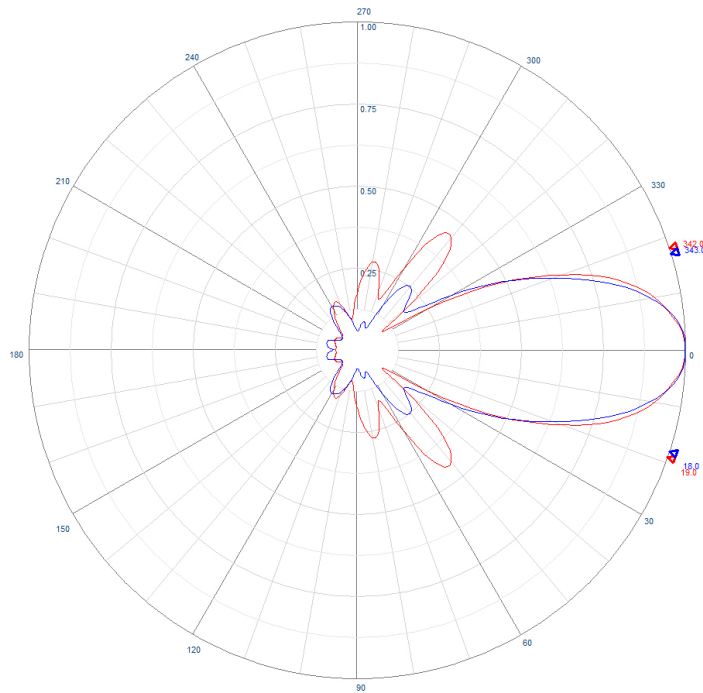
	Y2650-9	Y2650-18
Construction	White fibreglass radome and aluminium mount plate	
Frequency range	UHF 2.65GHz	
VSWR	<1.8:1 VSWR	
Tuning	Factory	
Number of elements	9	18
Gain - nominal	11.3dBi	17.8dBi
Maximum power	25 Watts	
Impedance	50 Ohms	
Polarisation	Mount horizontal or vertical as required	
H Plane	35°	29°
E Plane	35°	31°
Front-to-back ratio	-20 dB	-20 dB
DC grounding	Yes	Yes
Cable	200mm RG142B/U, rear exit from plate	
Connector	N-type female fitted to cable - as standard	
Dimensions	300mm x 80mm	700mm x 80mm
Weight	1.5kg	2kg
Projected area	0.015m ²	0.035m ²
Wind load at 160kph	1.82kg	4.26kg
Mounting hardware supplied	Aluminium mount plate, 2 x galvanised steel V-blocks and 2 x 50mm diameter galvanised steel U-bolts	
Installation tools required	13mm spanner for U-bolts securing	



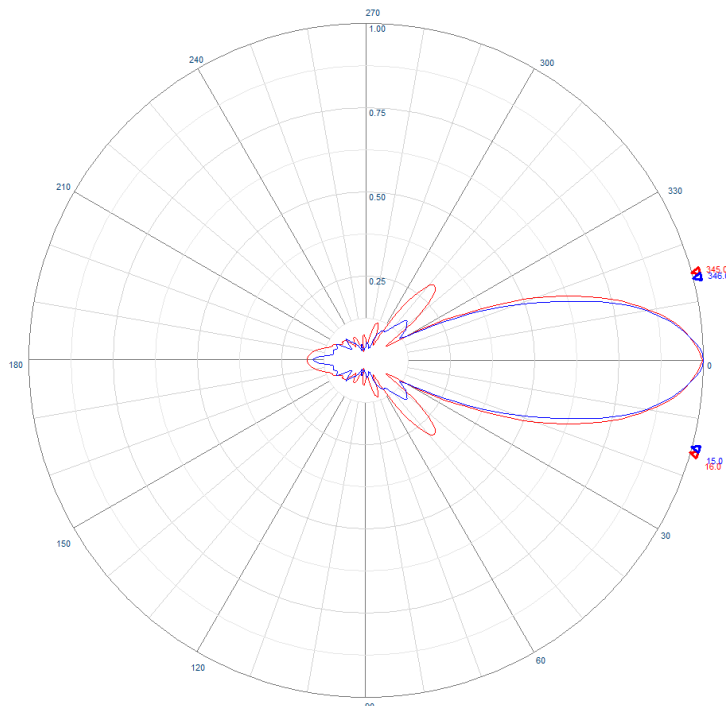
Y2650 Series

Radome enclosed directional point-to-point Yagi

B.R.S. / UHF 2.65GHz



Example radiation pattern - Y2650-8



Example radiation pattern - Y2650-18

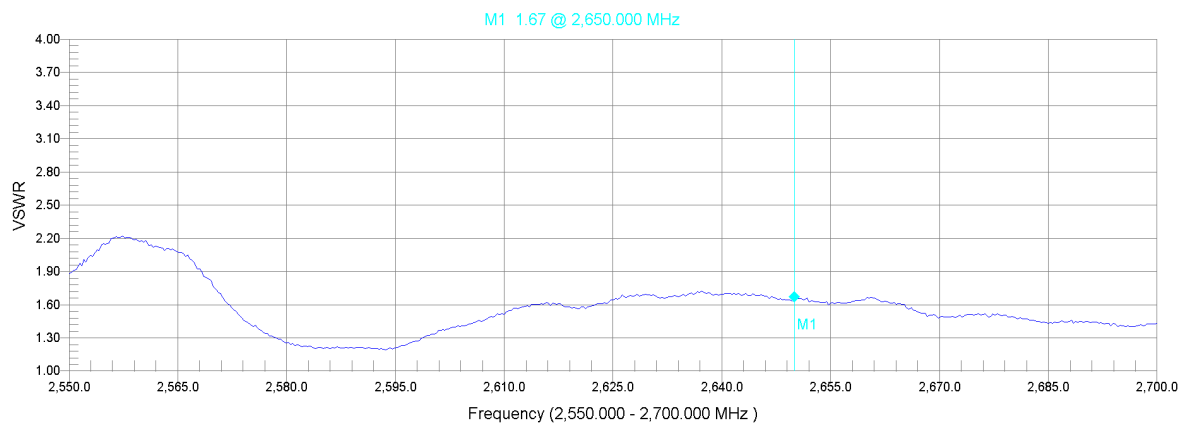
Y2650 Series

Radome enclosed directional point-to-point Yagi

B.R.S. / UHF 2.65GHz

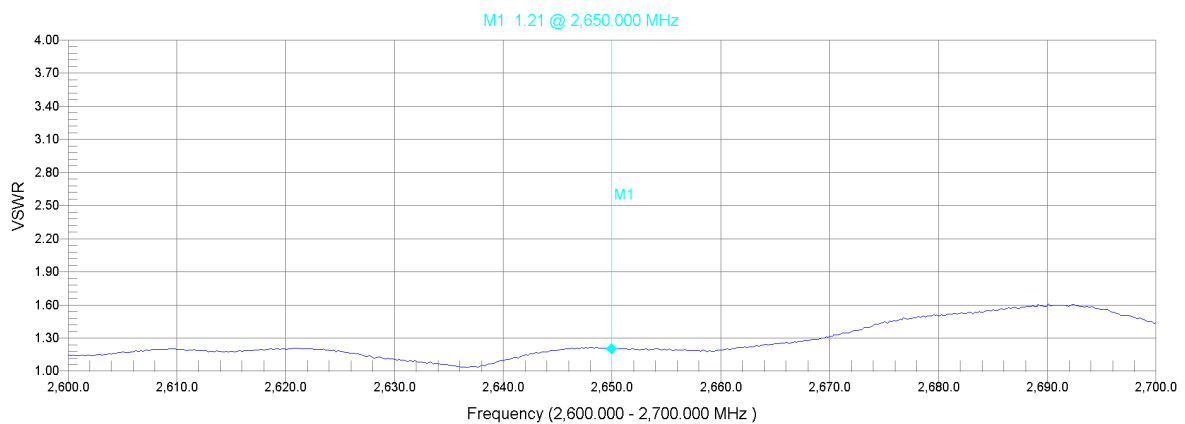


Typical VSWR
Y2650-9 2.65GHz



Typical VSWR - Y2650-9

Typical VSWR
Y2650-18 2.65GHz



Typical VSWR - Y2650-18


Y2650 Series

Radome enclosed directional point-to-point Yagi

B.R.S. / UHF 2.65GHz




Suitable mounting hardware



CFB series - Galvanised steel 'J' hockey stick brackets, 1.1 - 2.1 metres.

Requires A-4266 series + 2 x EB1-SS or 1 x UB2-SS




A-2654-2 - Aluminium pole extension 1.1 metres includes pole mounting brackets.

Requires A-4266 + 2 x EB1-SS or 1 x UB2-SS



SFB Series - galvanised steel pole extension 0.9-2.0 metres Roof or overhang mounting


Requires A-4266 + 2 x EB1-SS or 1 x UB2-SS



A-2307 - 6-piece aluminium & fibreglass mast - 6.68m

Includes: insulated top, guy wires, spigots and base bracket.

Suitable feeder coaxial cable and connectors



RU400 Solid copper conductor, low loss coaxial cable
CNT-400 / LMR-400™ equivalent
(* times microwave)
P/N 7890

Available in 100m, 300m, 500m roll or alternatively request a custom cable assembly



N-type male crimp connector for RU400 low loss, solid conductor

P/N 8226

Tri-metal plated



1/2" super flexible helical shielded, foam dielectric coaxial cable
P/N ZCG1250SF

Available in per metre, 500m roll or alternatively request a custom cable assembly



N-type male clamp connector for 1/2" super flexible, helical shielded coaxial cable

P/N NM1250SF

Tri-metal plated



1/2" corrugated shielding, foam dielectric coaxial cable
P/N ZCG1250

Available in per metre, 500m roll or alternatively request a custom cable assembly



N-type male clamp connector for 1/2" flexible, corrugated shielded, coaxial cable


P/N NM1250

Tri-metal plated



7/8" corrugated shielding, foam dielectric coaxial cable
P/N ZCG7850

Available in per metre, 500m roll or alternatively request a custom cable assembly



N-type male clamp connector for 7/8" flexible, corrugated shielded, coaxial cable

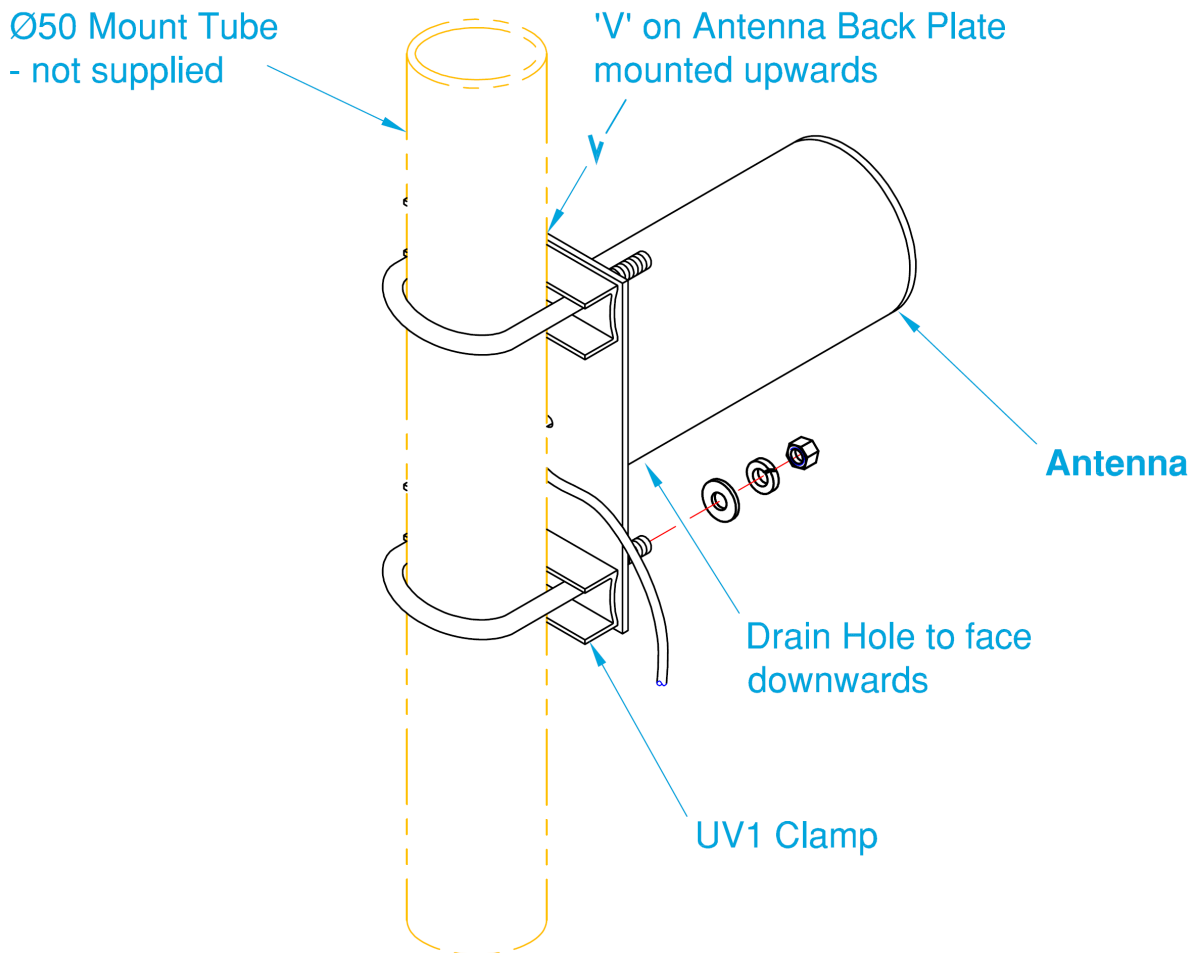
P/N NM7850

Tri-metal plated

Y2650 Series

Radome enclosed directional point-to-point Yagi

B.R.S. / UHF 2.65GHz



Vertical Polarisation: