

## ZRPM

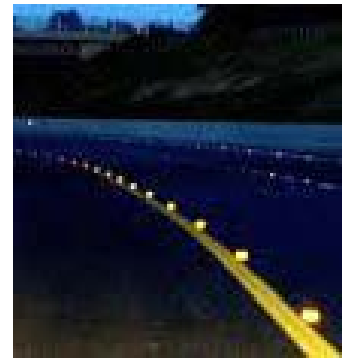
### Road embedded low profile data antenna ISM 915MHz and ISM/WiFi 2.4GHz



The ZRPM is a raised pavement marker data antenna. Currently in use for data collection from highway monitoring equipment. It is designed and manufactured to ensure long term survival and will deliver reliable performance, low profile and vandal resistant.

These antenna's perform at high efficiencies in a small package. Designed to be mounted directly onto the road pavement, just like a standard road marker.

These antennas have been potted with the same epoxy that secures the road marker to the road surface. No air gaps inside the road marker to maintain the mechanical integrity.



Colours available	Red, white or yellow - or specify requirements
Construction	High impact PVC , FR4 PCB,
Frequency range	ISM/IoT/M2M/LoRa - 915MHz and ISM2.4 - 2.4GHz
Tuning	Factory
Gain	3dBd
Maximum power	10 Watts
Impedance - nominal	50 Ohms
DC grounding	Yes
Polarisation	Vertical
Connector	SMA male fitted as standard - or specify requirements
Cable	2.0 metres H100 side exits from PVC or specify length requirements
Height	18mm
Weight	250grams

