

## Parallel mast mount clamps

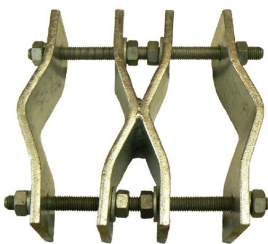
Page 1 of 2



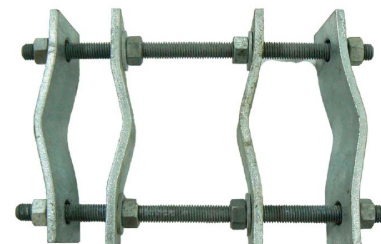
| Specifications                    | EB1-SS               |
|-----------------------------------|----------------------|
| Construction                      | 304 stainless steel  |
| Boom diameter                     | 20-40mm - round      |
| Mast diameter                     | 20-45mm - round      |
| Orientation                       | Parallel 180°        |
| Service                           | Light to medium-duty |
| Weight                            | 380grams             |
| 2 clamps recommended for mounting |                      |



| Specifications                       | UB3-SS               |
|--------------------------------------|----------------------|
| Construction                         | 304 stainless steel  |
| Boom diameter                        | 20-32mm - round      |
| Mast diameter                        | 20-45mm - round      |
| Orientation                          | Parallel 180°        |
| Service                              | Light to medium-duty |
| Weight                               | 450grams             |
| Single clamp sufficient for mounting |                      |



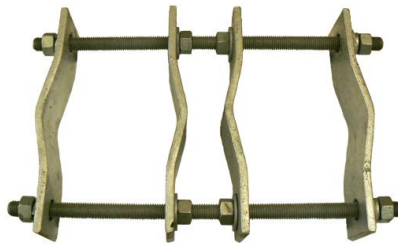
| Specifications                    | UAM180L          |
|-----------------------------------|------------------|
| Construction                      | Galvanised steel |
| Boom diameter                     | 40-75mm - round  |
| Mast diameter                     | 40-75mm - round  |
| Orientation                       | Parallel 180°    |
| Service                           | Heavy-duty       |
| Weight                            | 1.8kg            |
| 2 clamps recommended for mounting |                  |



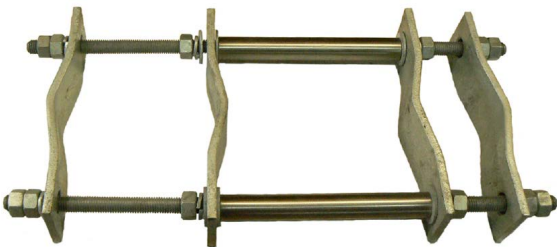
| Specifications                    | UAM180UNI        |
|-----------------------------------|------------------|
| Construction                      | Galvanised steel |
| Boom diameter                     | 40-75mm - round  |
| Mast diameter                     | 40-90mm - round  |
| Orientation                       | Parallel 180°    |
| Service                           | Heavy-duty       |
| Weight                            | 1.9kg            |
| 2 clamps recommended for mounting |                  |

## Parallel mast mount clamps

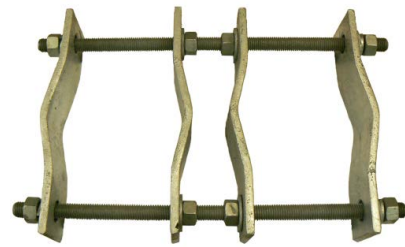
Page 2 of 2



| Specifications                    | UAM180UNIL       |
|-----------------------------------|------------------|
| Construction                      | Galvanised steel |
| Boom diameter                     | 40-90mm - round  |
| Mast diameter                     | 60-115mm - round |
| Orientation                       | Parallel 180°    |
| Service                           | Heavy-duty       |
| Weight                            | 2.1kg            |
| 2 clamps recommended for mounting |                  |



| Specifications                    | UAM180UNI-42                                       |
|-----------------------------------|--|
| Construction                      | Galvanised steel with 42mm stainless steel spacers |
| Boom diameter                     | 40-90mm - round                                    |
| Mast diameter                     | 60-115mm - round                                   |
| Orientation                       | Parallel 180°                                      |
| Service                           | Heavy-duty   |
| Weight                            | 2.3kg  |
| 2 clamps recommended for mounting |  |



| Specifications                    | UAM180UNIL-48     |
|-----------------------------------|-------------------|
| Construction                      | Galvanised steel  |
| Boom diameter                     | 50-70mm - round   |
| Mast diameter                     | 115-155mm - round |
| Orientation                       | Parallel 180°     |
| Service                           | Heavy-duty        |
| Weight                            | 2.5kg             |
| 2 clamps recommended for mounting |                   |