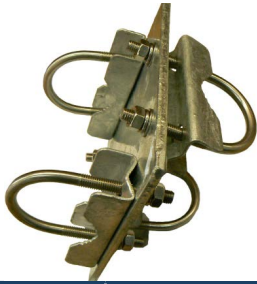


Right-Angle Heavy Duty Mast Mount Clamps

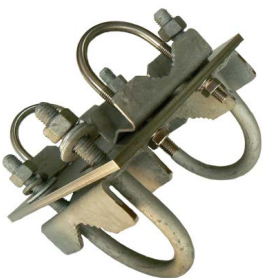
Page 1 of 2



Specifications	Y2300
Construction	Galvanised Steel
Boom Diameter	32-50mm (round)
Mast Diameter	30-50mm (round)
Orientation	Right-angle 90°
Service	Heavy Duty
Weight	1.8Kg



Specifications	Y2300-SS
Construction	Stainless Steel
Boom Diameter	32-50mm (round)
Mast Diameter	30-50mm (round)
Orientation	Right-angle 90°
Service	Heavy Duty
Weight	1.7Kg



Specifications	Y2300L
Construction	Galvanised Steel
Boom diameter	32-50mm (round)
Mast Diameter	40-70mm (round)
Orientation	Right-angle 90°
Service	Heavy Duty
Weight	2.6Kg



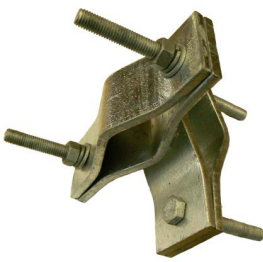
Specifications	Y2300SS-L
Construction	Stainless Steel
Boom diameter	32-50mm (round)
Mast Diameter	30-70mm (round)
Orientation	Right-angle 90°
Service	Heavy Duty
Weight	2.3Kg



Specifications	Y2300SS-XL
Construction	Stainless Steel
Boom diameter	32-50mm (round)
Mast Diameter	70-90mm (round)
Orientation	Right-angle 90°
Service	Heavy Duty
Weight	2.4Kg

Right-Angle Heavy Duty Mast Mount Clamps

Page 2 of 2



Specifications	UAM90L
Construction	Galvanised Steel
Boom Diameter	40-75mm (round)
Mast Diameter	40-75mm (round)
Orientation	Right-angle 90°
Service	Heavy Duty
Weight	1.7Kg



Specifications	UAM90LL
Construction	Galvanised Steel
Boom diameter	60-115mm (round)
Mast Diameter	60-115mm (round)
Orientation	Right-angle 90°
Service	Heavy Duty
Weight	2.2Kg



Specifications	UAM90UNI
Construction	Galvanised Steel
Boom Diameter	40-70mm (round)
Mast Diameter	40-90mm (round)
Orientation	Right-angle 90°
Service	Heavy Duty
Weight	1.9Kg



Specifications	SB1
Construction	Galvanised Steel
Boom Diameter	48.4mm (round)
Mast Diameter	48.4mm (round)
Orientation	Swivel 360°
Service	Medium Duty
Weight	1.7kg



Specifications	SB2
Construction	Galvanised Steel
Boom Diameter	48.4mm (round)
Mast Diameter	48.4mm (round)
Orientation	Set right-angle 90°
Service	Medium Duty
Weight	1.7kg



Specifications	SB4
Construction	Galvanised Steel
Boom Diameter	48.4mm (round)
Mast Mounting	Using M10 bolt
Orientation	360° mounting
Service	Medium Duty
Weight	1.7kg