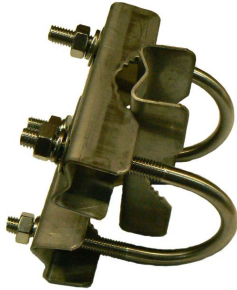
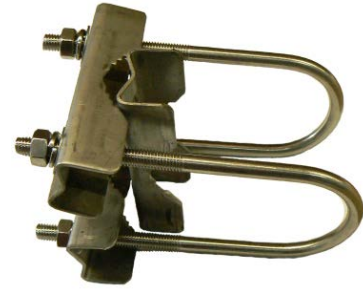


Right-angle mast mount clamps

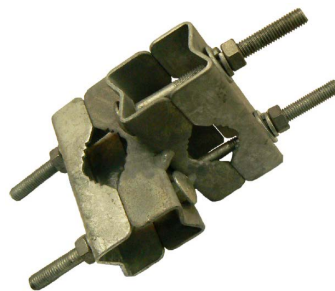
Light to medium-duty



Specifications	UB1/SS
Construction	304 stainless steel
Boom diameter	25mm - round
Mast diameter	38mm - round
Mounting orientation	Right-angle 90°
Service	Light to medium-duty
Weight	360grams
Recommended for stainless steel or aluminium antennas	



Specifications	UB2/SS
Construction	304 stainless steel
Boom diameter	20-50mm - round
Mast diameter	20-50mm - round
Mounting orientation	Right-angle 90°
Service	Light to medium-duty
Weight	540grams
Recommended for aluminium antennas	



Specifications	RB8
Construction	Galvanised steel
Boom diameter	20-40mm - round
Mast diameter	20-50mm - round
Mounting orientation	Right-angle 90°
Service	Light to medium-duty
Weight	540 grams
Recommended for stainless steel or aluminium antennas	