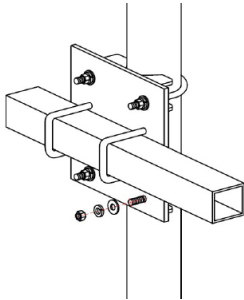


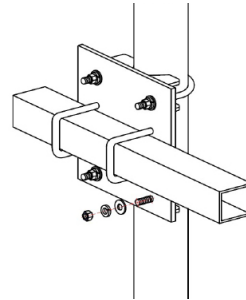
## Yagi mounting clamps

Square boom or CP Yagi

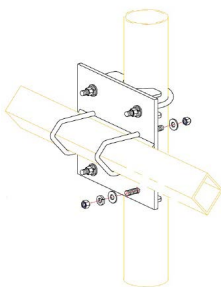
Page 1 of 2



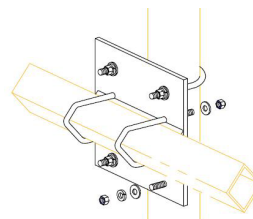
Specifications	A48
<b>Construction</b>	Aluminium & 304 stainless steel u-bolts
<b>Boom diameter</b>	25mm - square
<b>Mast diameter</b>	30-50mm - round
<b>Mounting orientation</b>	Right-angle 90°
<b>Weight</b>	600grams



Specifications	A48-65
<b>Construction</b>	Aluminium & 304 stainless steel u-bolts
<b>Boom diameter</b>	25mm - square
<b>Mast diameter</b>	50-60mm - round
<b>Mounting orientation</b>	Right-angle 90°
<b>Weight</b>	800grams



Specifications	A48-AM
<b>Construction</b>	Aluminium & 304 stainless steel U-bolts
<b>Boom diameter</b>	25mm - cross polarised
<b>Mast diameter</b>	30-50mm - round
<b>Mounting orientation</b>	Right-angle 90°
<b>Weight</b>	750grams

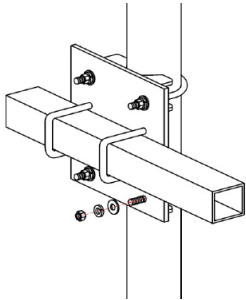


Specifications	A48-65-AM
<b>Construction</b>	Aluminium & 304 stainless steel u-bolts
<b>Boom diameter</b>	25mm - cross polarised
<b>Mast diameter</b>	30-50mm - round
<b>Mounting orientation</b>	Right-angle 90°
<b>Weight</b>	820grams

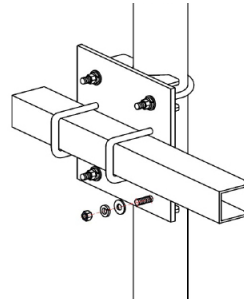
## Yagi mounting clamps

Square boom or CP Yagi

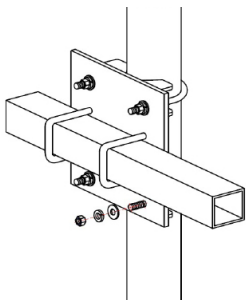
Page 2 of 2



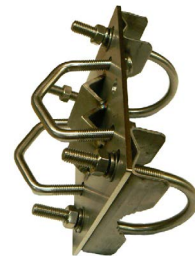
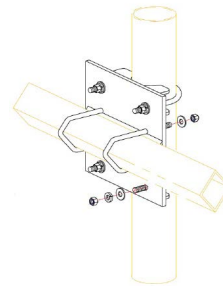
Specifications	S48
Construction	304 stainless steel plate & u-bolts
Boom diameter	25mm - square
Mast diameter	30-50mm - round
Mounting orientation	Right-angle 90°
Weight	750grams



Specifications	S48-76
Construction	304 stainless steel plate & u-bolts
Boom diameter	25mm - square
Mast diameter	50-76mm - round
Mounting orientation	Right-angle 90°
Weight	2.0kg



Specifications	S48-90
Construction	304 stainless steel plate & u-bolts
Boom diameter	25mm - square
Mast diameter	70-90mm - round
Mounting orientation	Right-angle 90°
Weight	2.2kg



Specifications	S48-AM
Construction	304 stainless steel plate & u-bolts
Boom diameter	25mm - cross polarised
Mast diameter	30-50mm - round
Mounting orientation	Right-angle 90°
Weight	800grams