

Hockey stick mount pole

Antenna mounting pole with optional stay support


In-stock
Ready to
Ship
*Build to order
item

A "hockey stick" mounting pole is a quick and easy to install accessories for clearing guttering or over hangs on a building or wall. The antenna is then mounted to the "hockey stick" using the appropriate mounting hardware with additional adaptor if required. Please contact ZCG for more information or assistance.

For increased wind support, utilising a stay assembly will reduce wind load failure.

Mounting hardware, coaxial feeder cable, bird-proofing and other installation accessories are all available separately.

Order code	CFB1100*	CFB1200-AL*	CFB1800	CFB1800-SS*	CFB2400*	CFB2700*
Construction	Fully-welded galvanised steel	Fully welded aluminium	Fully-welded galvanised steel	Fully welded 304 grade stainless steel	Fully-welded galvanised steel	
Dimensions	1.1m (43") x 30mmø	1.2m (47") x 25mmø	1.8m (71") x 30mmø	1.8m (71") x 25mmø	2.4m (91") x 30mmø	2.7m (106")x 30mmø
Suitable antennas	Any antenna that requires a stand off around a roofs overhang: Examples: SG700-MMA, SGDB-T10, CM1600-AM, Y4 or Y8 series Yagi or LPY698-2700 - Please consult ZCG for more other capatible antennas					
Mounting	Use the 4 holes provided - For mounting antennas you will require mounting brackets and/or adaptors. Please consult ZCG to assist with your requirements					
Mounting position recommended	Mount as high on your dascia board, barge board or wall as possible to have pole extending above roof. Mount antenna/s as high on pole as possible, ensuring no contact between antennas.					
Increased wind load accessories order separate	CFB902056 - Aluminium stay assembly - 1.8m x 16mm tube CSB38 - Aluminium stay collar - 39mm I.D x 25mm					



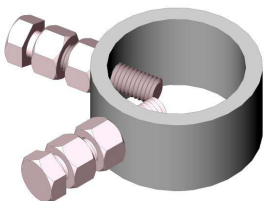
Galvanised steel models



316 stainless steel models

CFB1200-AL Aluminium model

In high wind areas, ZCG recommend the use of the CFB902056 stay support assemblies to increase survivability and stability of your fascia 'hockey stick' mount as well as securing your antenna during high wind locations such as oceanic or marine environments.



CSB38 aluminium stay collar with 39mm internal capability.



CBF series with wind load stay assembly fitted for increased wind load capability and support.



CFB series mount bracket with mounting holes and mounting slots for alternative mounting

Hockey stick mount pole

Antenna mounting pole with optional stay support


In-stock
Ready to
Ship
*Build to order
item

