

7/16" DIN connectors

Suits RG214 to 1-5/8" foam dielectric cables

Page 1 of 2


In-stock
Ready to
Ship
* Signifies build to
order item

716DINF400*



7/16" DIN female
crimp connector
For RU400 cable,

Tri-metal plated
Low P.I.M.

716DINF1450*



7/16" DIN female
clamp connector
1/4" flexible cable,

Tri-metal plated
Low P.I.M.

716DINF1250



7/16" DIN female
clamp connector
1/2" flexible cable,
2 kW max power

Tri-metal plated
Low P.I.M.

716DINF1250SF



7/16" DIN female
clamp connector
1/2" super flexible
cable,
2 kW max power

Tri-metal plated
Low P.I.M.

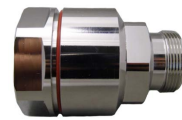
716DINF7850



7/16" DIN female
clamp connector
7/8" flexible cable,
2 kW max power

Tri-metal plated
Low P.I.M.

716DINF1140*



7/16" DIN female
clamp connector
1-1/4" flexible cable,
2 kW max power

Tri-metal plated
Low P.I.M.

716DINF1580*



7/16" DIN female
connector
1-5/8" flexible cable,
2 kW max power

Tri-metal plated
Low P.I.M.

8215



Flange mount
7/16" DIN female
connector with o-ring
supplied,
2 kW max power

Tri-metal plated
Low P.I.M.

8215-2



Flange mount
7/16" DIN female
connector For RG142

Tri-metal plated
Low P.I.M.

8215-3



Flange mount
7/16" DIN female
connector

Tri-metal plated
Low P.I.M.

8243



7/16" DIN female
clamp connector
For RG213/RG8

Tri-metal plated
Low P.I.M.

[7/16" DIN males on following page...](#)

7/16" DIN connectors

Suits RG214 to 1-5/8" foam dielectric cables

Page 2 of 2


In-stock
Ready to
Ship
* Signifies build to
order item

<p>8244</p>  <p>7/16" DIN male clamp connector For RU400 cable</p> <p>Tri-metal plated Low P.I.M.</p>	<p>8245</p>  <p>Right-angle 7/16" DIN male crimp connector For RU400 cable</p> <p>Tri-metal plated Low P.I.M.</p>	<p>8253</p>  <p>7/16" DIN male crimp connector For RG213 cable</p> <p>Tri-metal plated Low P.I.M.</p>
<p>716DINMRG214*</p>  <p>7/16" DIN male clamp connector For RG214 cable</p> <p>Tri-metal plated Low P.I.M.</p>	<p>716DINMRG214-C*</p>  <p>7/16" DIN male crimp connector For RG214 cable</p> <p>Tri-metal plated Low P.I.M.</p>	<p>716DINM400*</p>  <p>7/16" DIN male crimp connector For RU400 cable</p> <p>Tri-metal plated Low P.I.M.</p>
<p>716DINM1450*</p>  <p>7/16" DIN male clamp connector 1/4" flexible cable</p> <p>Tri-metal plated Low P.I.M.</p>	<p>716DINM1250</p>  <p>7/16" DIN male clamp connector 1/2" flexible cable 2 kW max power</p> <p>Tri-metal plated Low P.I.M.</p>	<p>716DINM1250SF</p>  <p>7/16" DIN male clamp connector 1/2" super flexible cable, 2 kW max power</p> <p>Tri-metal plated Low P.I.M.</p>
<p>716DINM7850</p>  <p>7/16" DIN male clamp connector 7/8" flexible cable, 2 kW max power</p> <p>Tri-metal plated Low P.I.M.</p>	<p>716DINM1580*</p>  <p>7/16" DIN male clamp connector 1-5/8" flexible cable, 2 kW max power</p> <p>Tri-metal plated Low P.I.M.</p>	<p>716DINRAM1250</p>  <p>Right-angle 7/16" DIN male clamp connector 1/2" flexible cable, 2 kW max power</p> <p>Tri-metal plated Low P.I.M.</p>
<p>716DINRAM1250SF</p>  <p>Right-angle 7/16" DIN male clamp connector 1/2" super flexible cable, 2 kW max power</p> <p>Tri-metal plated Low P.I.M.</p>	<p>716DINM5850-A</p>  <p>7/16" DIN male clamp connector 5/8" air cable</p> <p>Tri-metal plated Low P.I.M.</p>	