

ZWG-WR42A Series

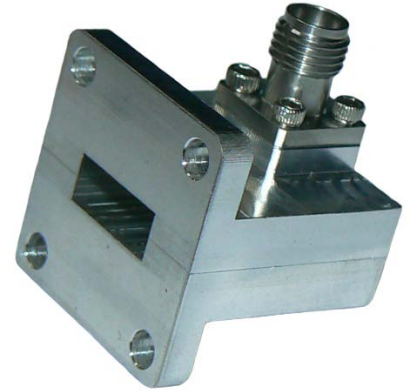
WR42 (BJ220) Waveguide to SMA adaptors

SHF 18.0-26.5GHz



Design Features:

- High RF Performance
- Suitable for Military, space and commercial applications
- Available with a wide range of coaxial terminations.
- Available in alternate frequencies, please consult ZCG for more information.



	Freq. Range	Insertion Loss Max	VSWR Max	Connector type Waveguide	Connector type Coaxial	CW Power	Peak power	Temp. (C)
ZWG-WR42A-SF	18.0~26.5GHz	0.32dB	1.3:1	WR42 (BJ220)	SMA female	50 Watts	3 Kilowatts	-55~+85
ZWG-WR42A-SM					SMA male			
ZWG-WR42A-KF					3.5mm female			
ZWG-WR42A-KM					3.5mm male			
ZWG-WR42A-F					2.92mm female			
ZWG-WR42A-M					2.92mm male			

